

CATÁLOGO DE PEÇAS



DAFRA KANSAS 150 ZONGSHEN ZS125-30

Escrito por Daniel Ribeiro

Motos Blog

Informações, dicas e notícias para os apaixonados por motos

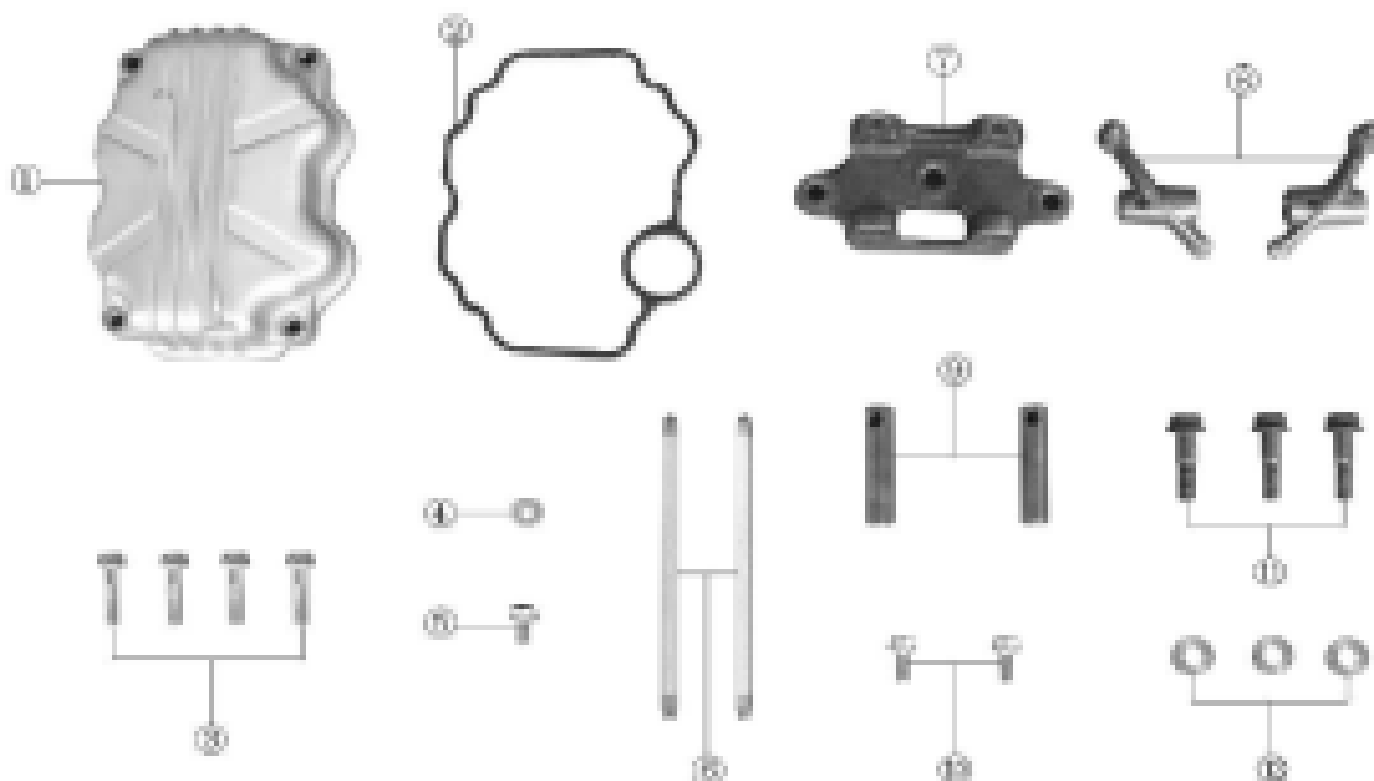
<http://www.motosblog.com.br>

Índice

Índice	2
Motor	3
Tampa do Cabeçote	3
Cabeçote	4
Cilindro	5
Tampa lateral Direita	6
Embreagem	7
Embreagem	7
Filtro de óleo	8
Engrenagens da bomba de óleo	9
Tampa lateral esquerda	10
Tampa lateral esquerda	10
Magneto	11
Embreagem de partida	12
Carcaça Esquerda	13
Carcaça Esquerda	13
Virabrequim	14
Carcaça Direita do motor	15
Antipoluição	16
Chassis	17
Farol	17
Painel e mesa superior	18
Piscas	19
Lanterna traseira	20
Mesa inferior	21
Guidon	22
Roda dianteira	23
Escapamento	24
Filtro de ar e carburador	25
Paralama traseiro	26
Paralama dianteiro	27
Suspensão e freio dianteiro	28
Chicote Elétrico	29
Cabos de controle	30
Roda Traseira	31
Bateria	32
Suspensão Dianteira	33
Suspensão traseira e bagageiro	34
Assento e Tampas laterais	35
Chassis	36
Balança traseira	37
Transmissão secundária	38
Cavalete central e lateral	39
Pedais	40
Pedaleiras	41
Tanque	42
Ignição	43
Freio traseiro	44

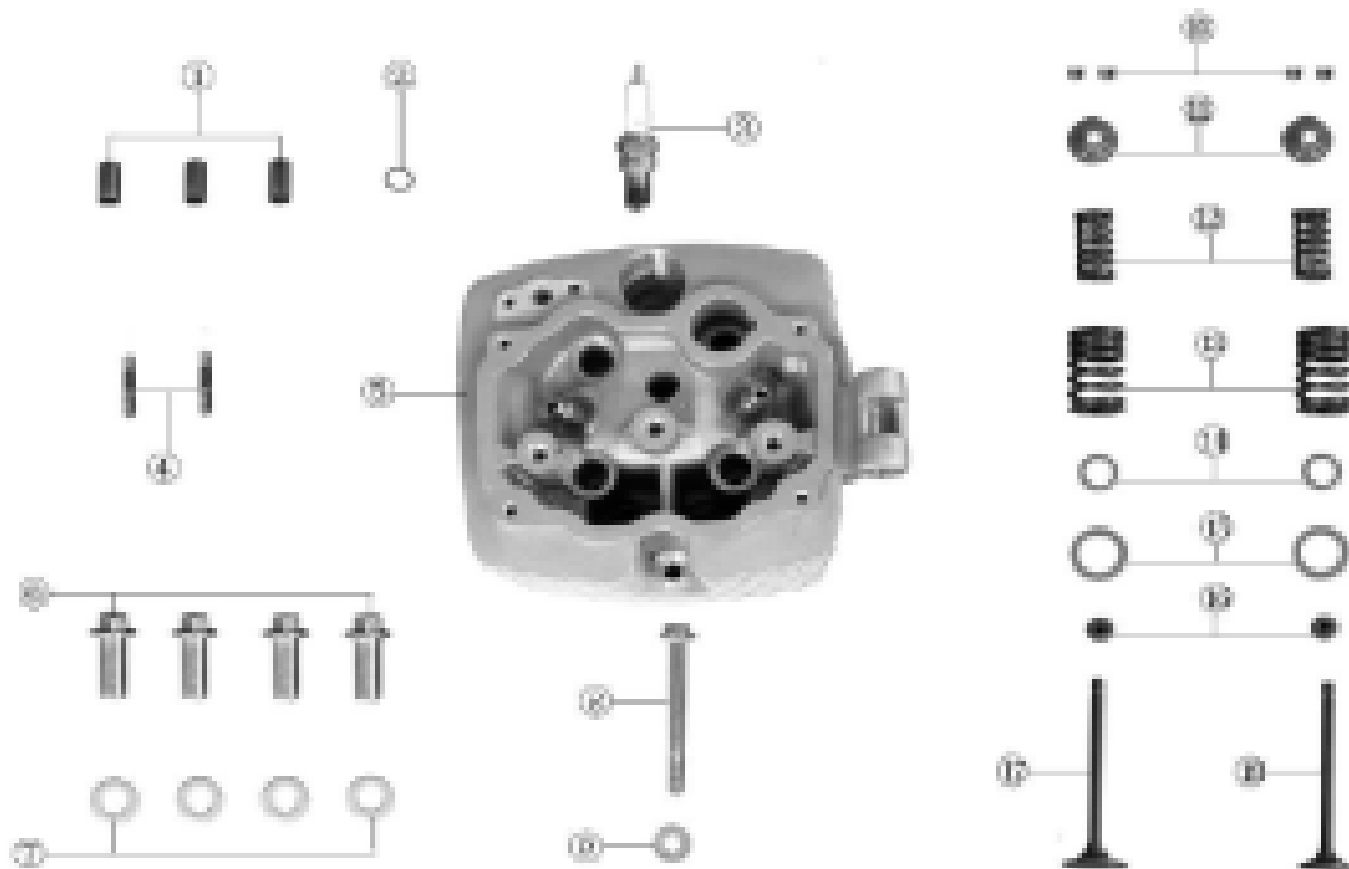
Motor

Tampa do Cabeçote



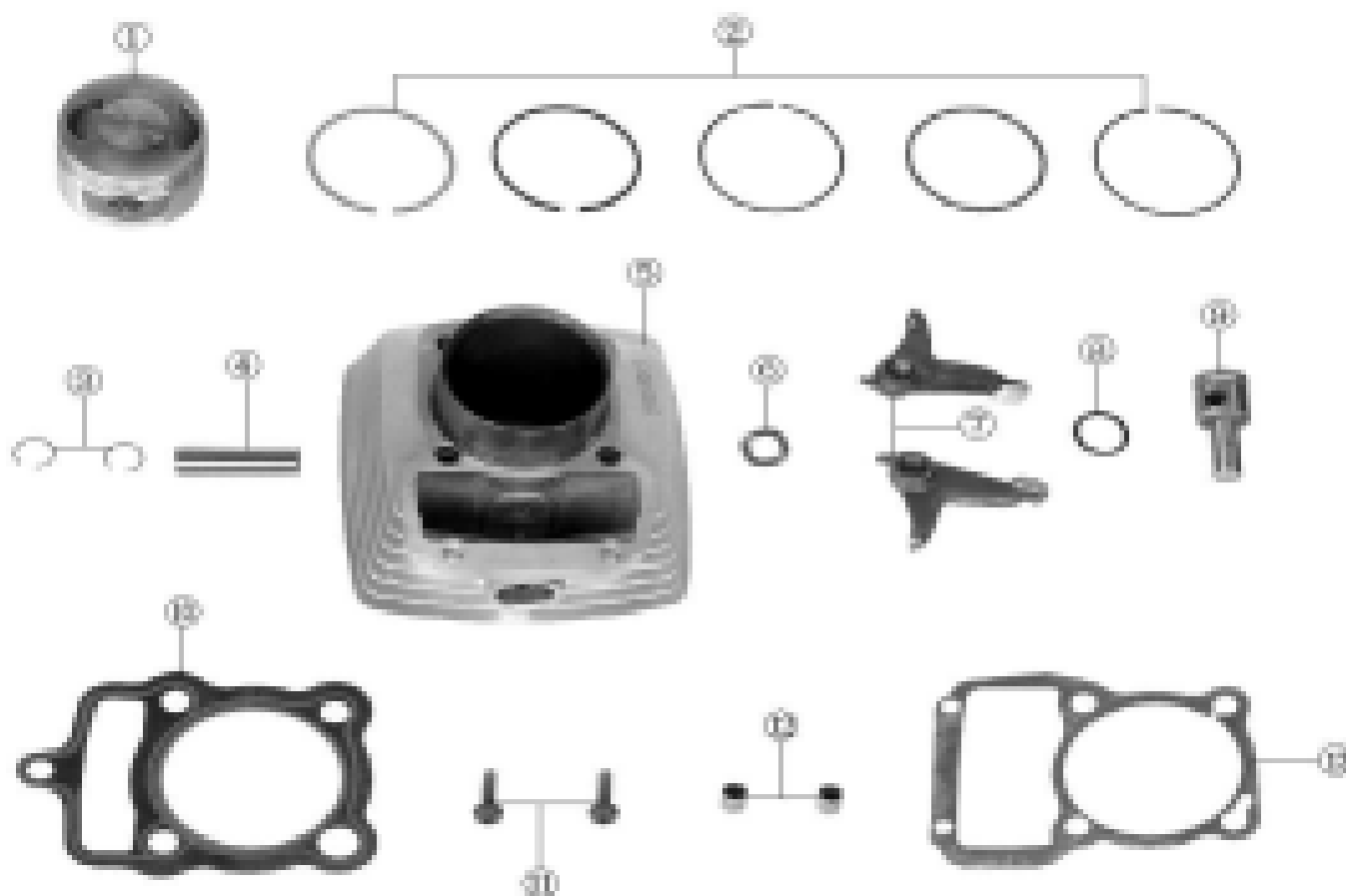
REF NO.	PARTS NO.	EN DESCRIPTION	VPC/komad	MPC/komad
P2-1	11226-I022-0000	UPPER COVER, CYLINDER HEAD	163,80 kn	199,84 kn
P2-2	90103-I008-0000	SEAL RING, UPPER COVER	50,40 kn	61,49 kn
P2-3	B05789000600287	BOLT M6×28	8,82 kn	10,76 kn
P2-4	93301-70651012000	AL WASHER 6	1,26 kn	1,54 kn
P2-5	B05789000600127	BOLT M6×12	5,04 kn	6,15 kn
P2-6	1532A-I008-0000	PUSHING ROD COMP	33,60 kn	40,99 kn
P2-7	15406-I008-0000	ROCKER SHAFT, VALVE SETTING	82,80 kn	101,02 kn
P2-8	15401-I016-0000	ROCKER, VALVE	64,68 kn	78,91 kn
P2-9	15402-I016-0000	ROCKER SHAFT, VALVE	26,46 kn	32,28 kn
P2-10	B05783000600167	BOLT M6×16	6,30 kn	7,69 kn
P2-11	91180-I008-0000	BOLT M8×28	8,82 kn	10,76 kn
P2-12	93301-80852218000	COOPER WASHER 8.5×2.2×18	7,56 kn	9,22 kn

Cabeçote



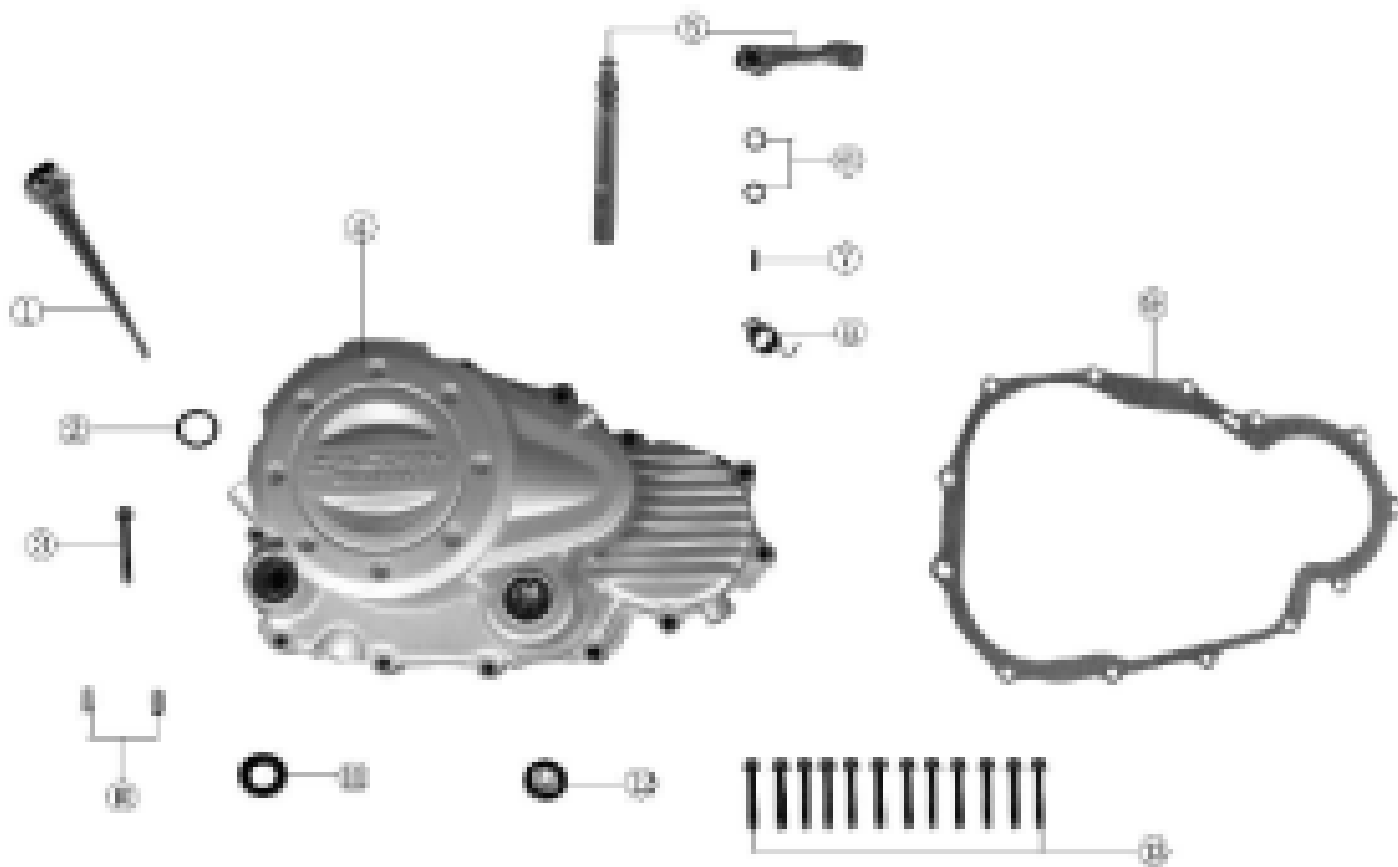
REF NO.	PARTS NO.	EN DESCRIPTION	VPC/komad	MPC/komad
P3-1	91521-10002000000	Pin 10×20	2,52 kn	3,07 kn
P3-2	90101-20100000160	O Ring 10×1.6	28,98 kn	35,36 kn
P3-3	81300-I006-0000	SPARK PLUG(D8TC)	53,76 kn	65,59 kn
P3-4	91138-I008-0000	DOUBLE HEAD BOLT	5,04 kn	6,15 kn
P3-5	1122B-I008-0000	CYLINDER HEAD COMP	549,36 kn	670,22 kn
P3-6	91212-I008-0000	Bolt M8×32	13,86 kn	16,91 kn
P3-7	93301-C12520220	washer 12.5×2×22	1,26 kn	1,54 kn
P3-8	91104-I008-0000	BOLT M8×78	18,90 kn	23,06 kn
P3-9	93301-80852218000	COOPER washer 8.5×2.2×18	7,56 kn	9,22 kn
P3-10	15707-I008-0000	VALVE COTTER	7,56 kn	9,22 kn
P3-11	15705-I008-0000	RETAINER,VALVE SPRING	13,86 kn	16,91 kn
P3-12	15704-I008-0000	VALVE INNER SPRING	23,94 kn	29,21 kn
P3-13	15703-I008-0000	VALVE OUTER SPRING	36,54 kn	44,58 kn
P3-14	15708-I008-0000	RETAINER,VALVE INNER SPRING	5,04 kn	6,15 kn
P3-15	15706-I008-0000	RETAINER,VALVE OUTER SPRING	3,78 kn	4,61 kn
P3-16	1572B-I008-0000	OIL SEAL,VALVE	32,76 kn	39,97 kn
P3-17	15702-I008-0000	INLET VALVE	103,68 kn	126,49 kn
P3-18	15701-I008-0000	EXHAUST VALVE	76,32 kn	93,11 kn

Cilindro



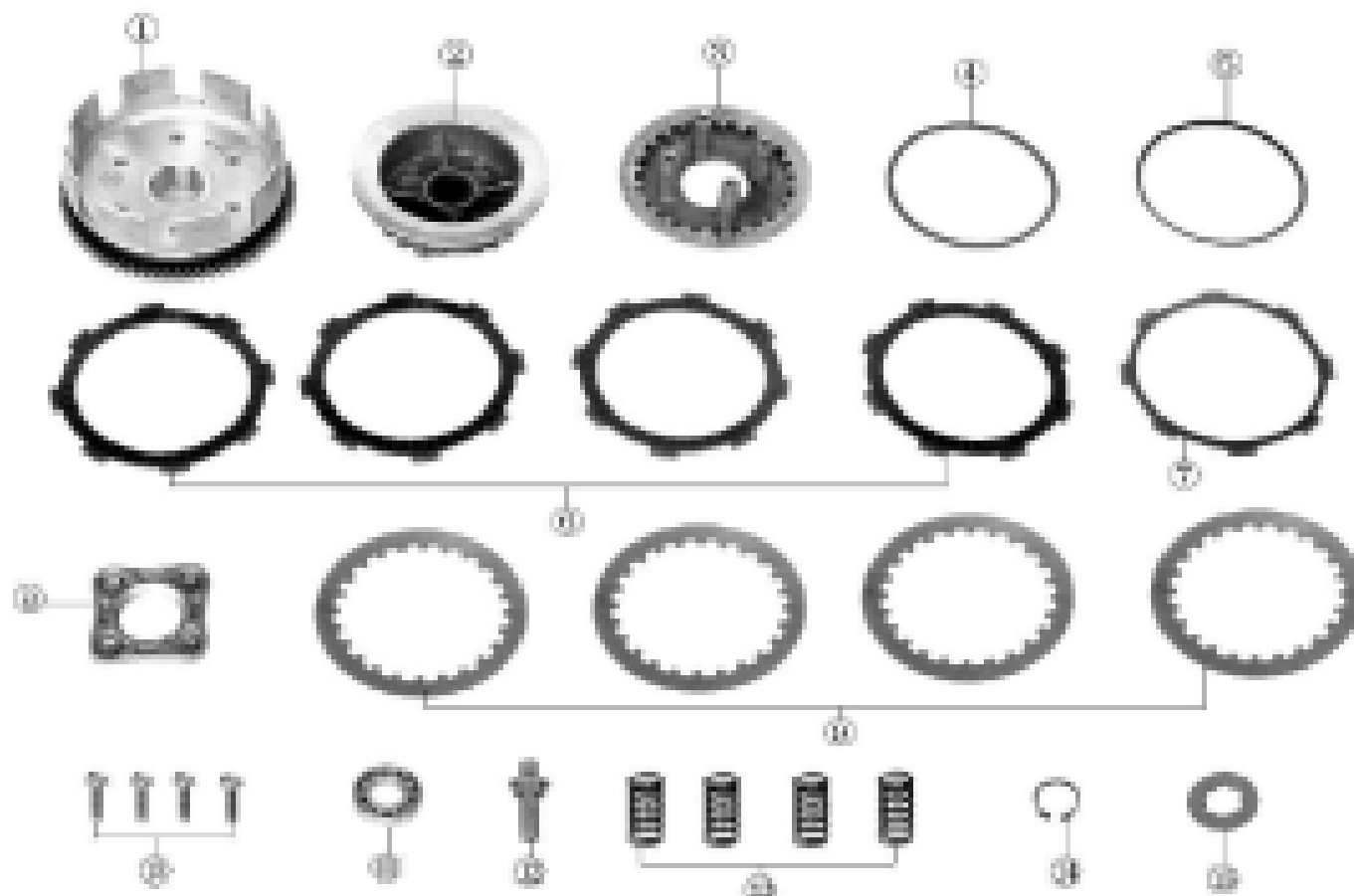
REF NO.	PARTS NO.	EN DESCRIPTION	VPC/komad	MPC/komad
P4-1	13101-I008-0000	Piston	108,00 kn	131,76 kn
P4-2	1310A-I008-0000	Piston Ring Set	80,10 kn	97,72 kn
P4-3	91401-I006-0000	Circlip,Piston Pin	2,52 kn	3,07 kn
P4-4	13102-I006-0000	Piston Pin	28,80 kn	35,14 kn
P4-5	1110B-I008-0000	Cylinder Body Comp	245,11 kn	299,03 kn
P4-6	93303-51230220900	Rolling Washer 12.3×02×20.9	6,30 kn	7,69 kn
P4-7	15407-I008-0000	Lower Rocker	60,48 kn	73,79 kn
P4-8	90101-20180000250	O Seal Ring 18×2.5	10,08 kn	12,30 kn
P4-9	15408-I008-0000	Lower Rocker Axle	50,40 kn	61,49 kn
P4-10	9022B-J034-0000	Gasket Comp,Cylinder Head	51,24 kn	62,51 kn
P4-11	91113-I008-00000G	Connect Bolt M6×22	11,34 kn	13,83 kn
P4-12	91521-10001400000	Pin 10×14	2,52 kn	3,07 kn
P4-13	90205-I008-0000	Gasket,Cylinder Body	13,86 kn	16,91 kn

Tampa lateral Direita



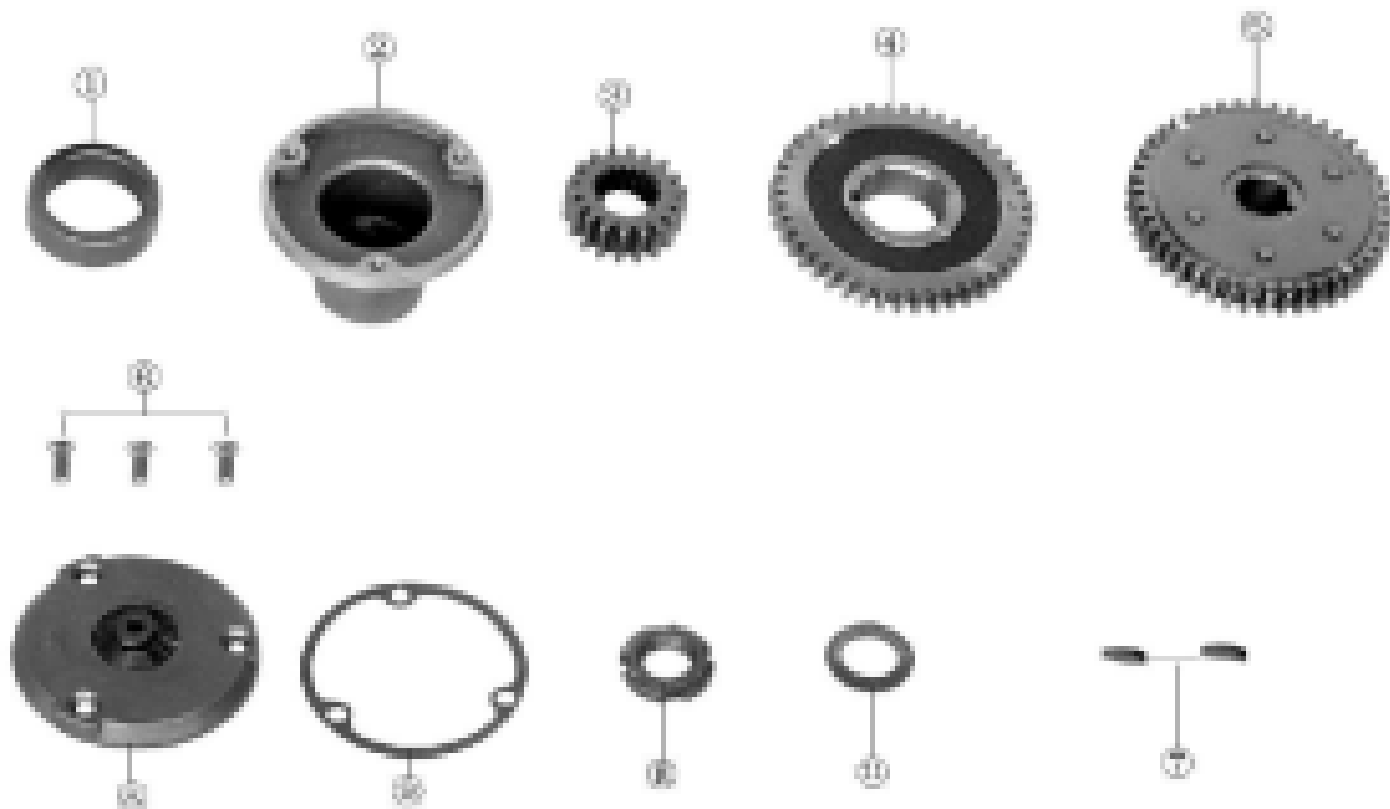
REF NO.	PARTS NO.	EN DESCRIPTION	VPC/komad	MPC/komad
P5-1	14308-I006-01010G	Oil Ruller	25,20 kn	30,74 kn
P5-2	90101-101800000300	O Ring 18×3	2,52 kn	3,07 kn
P5-3	B166740A0600457	BOLT M6×45	7,56 kn	9,22 kn
P5-4	12421-LA12-0000	R Side Cover,Cylinder Body	271,42 kn	331,13 kn
P5-5	2242A-I006-0300	Clutch Lever	47,04 kn	57,39 kn
P5-6	90101-10092000180	O Ring 9.2×1.8	2,52 kn	3,07 kn
P5-7	91523-I006-0000	DOWEL PIN	17,64 kn	21,52 kn
P5-8	22427-I008-0000	Spring,Clutch Lever	7,56 kn	9,22 kn
P5-9	90206-I042-0000	gasket,right cramkcase cover	32,64 kn	39,82 kn
P5-10	91521-08001400000	Pin 8×14	1,26 kn	1,54 kn
P5-11	90304-I006-0000	OIL SEAL 16×28×7	17,64 kn	21,52 kn
P5-12	12426-I008-0000	WINDOW,OIL LEVEL	17,64 kn	21,52 kn
P5-13	B166740A0600407	BOLT M6×40	7,56 kn	9,22 kn

Embreagem



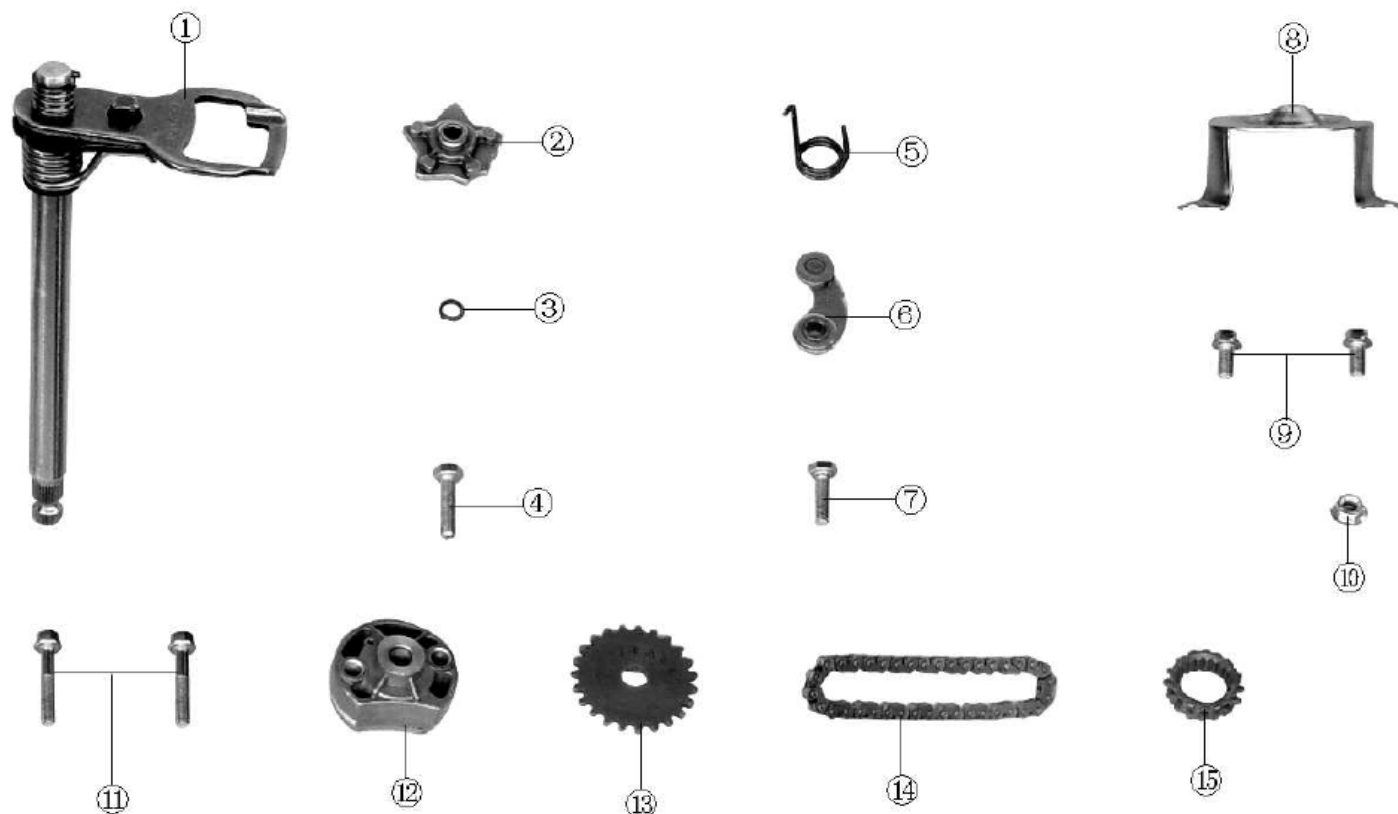
REF NO.	PARTS NO.	EN DESCRIPTION	VPC/komad	MPC/komad
P6-1	22150-I008-0000	Outer Cover,Clutch	193,28 kn	235,81 kn
P6-2	22105-I008-0000	Central Sleeve,Clutch	80,64 kn	98,38 kn
P6-3	22122-I008-0000	Press Disk,Clutch	59,64 kn	72,76 kn
P6-4	22144-I016-0000	Buffer Spring Seat,Clutch	54,72 kn	66,76 kn
P6-5	22129-I016-0000	Buffer Spring ,Clutch	54,72 kn	66,76 kn
P6-6	22214-I008-0001	Primary Driven Friction Plate I,Clutch	35,28 kn	43,04 kn
P6-7	22214-I008-0002	Primary Driven Friction Plate II,lutch	35,28 kn	43,04 kn
P6-8	22121-I008-0000	End Plate,Clutch	22,68 kn	27,67 kn
P6-9	22215-I008-0000	Secondary Driven Friction Plate,Clutch	22,68 kn	27,67 kn
P6-10	91129-I008-0000	Bolt M6×22	5,04 kn	6,15 kn
P6-11	92102-00000006001	Bearing 6001	53,76 kn	65,59 kn
P6-12	22403-I006-0000	Pushing Rod,Clutch	21,42 kn	26,13 kn
P6-13	22142-I008-0000	Spring.Clutch	7,56 kn	9,22 kn
P6-14	90403-I008-0000	Circlip 20	2,52 kn	3,07 kn
P6-15	22002-I008-0000	Spline Wahser,Clutch	11,34 kn	13,83 kn

Filtro de óleo



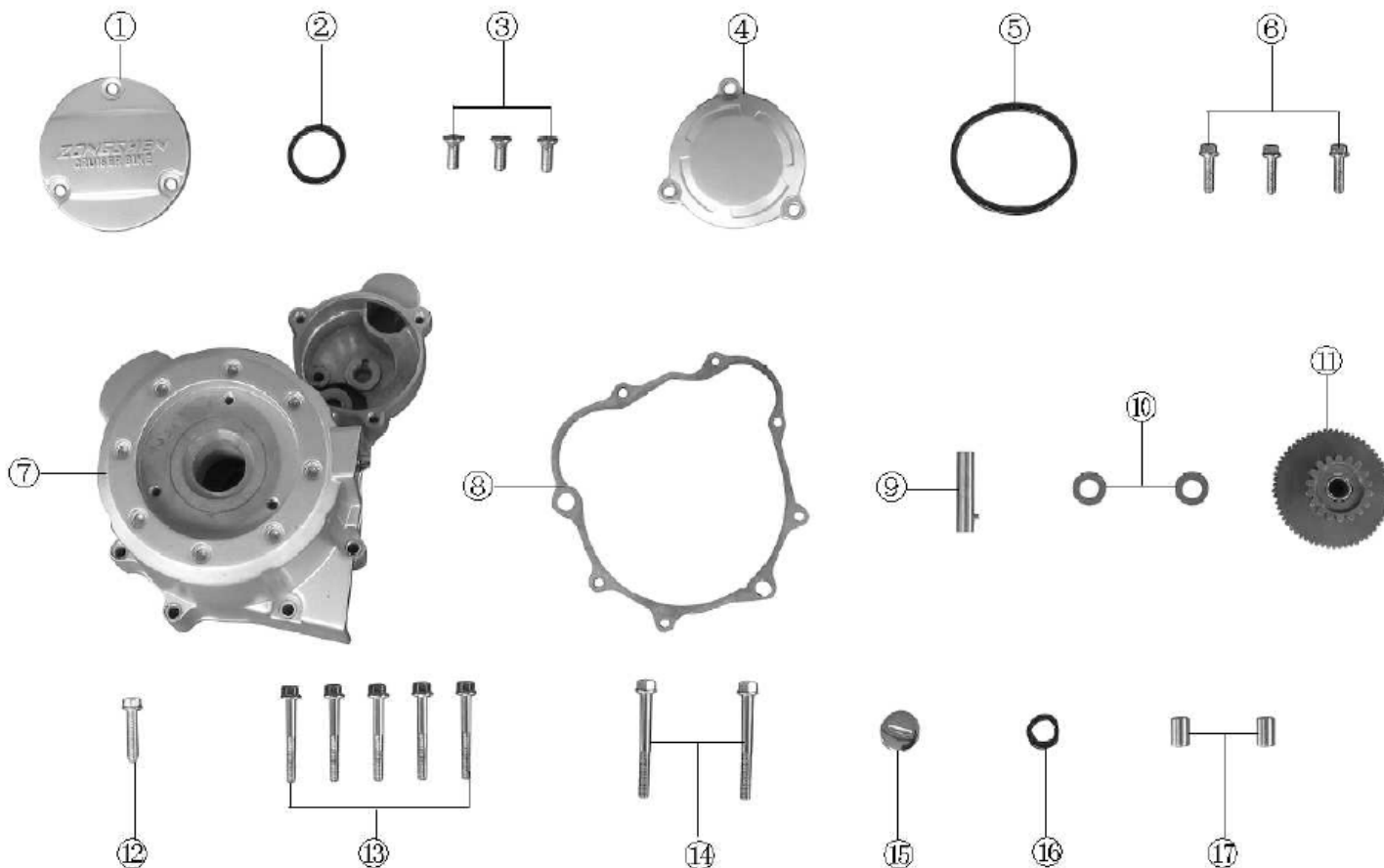
REF NO.	PARTS NO.	EN DESCRIPTION	VPC/komad	MPC/komad
P7-1	23225-I042-0000	Collar	80,64 kn	98,38 kn
P7-2	14205-I042-0000	Body,Oil Filter	86,40 kn	105,41 kn
P7-3	23001-I042-0000	Primary Gear	93,60 kn	114,19 kn
P7-4	13302-I042-0000	Primary Balance Gear	229,50 kn	279,99 kn
P7-5	1331B-I042-0000	Secondary Balance Gear	229,50 kn	279,99 kn
P7-6	B008190005001220B	Screw M5×12	5,04 kn	6,15 kn
P7-7	91601-I006-0000	Semicircle Spline 25×14×4	5,04 kn	6,15 kn
P7-8	14207-I006-0000	Cover,Oil Filter	31,50 kn	38,43 kn
P7-9	90209-I006-0000	Gasket,Oil Filter Cover	2,52 kn	3,07 kn
P7-10	91203-I006-0000	Nut,Oil Filter	13,86 kn	16,91 kn
P7-11	22004-I006-0000	Disc Washer 16.2×3×27	2,52 kn	3,07 kn

Engrenagens da bomba de óleo



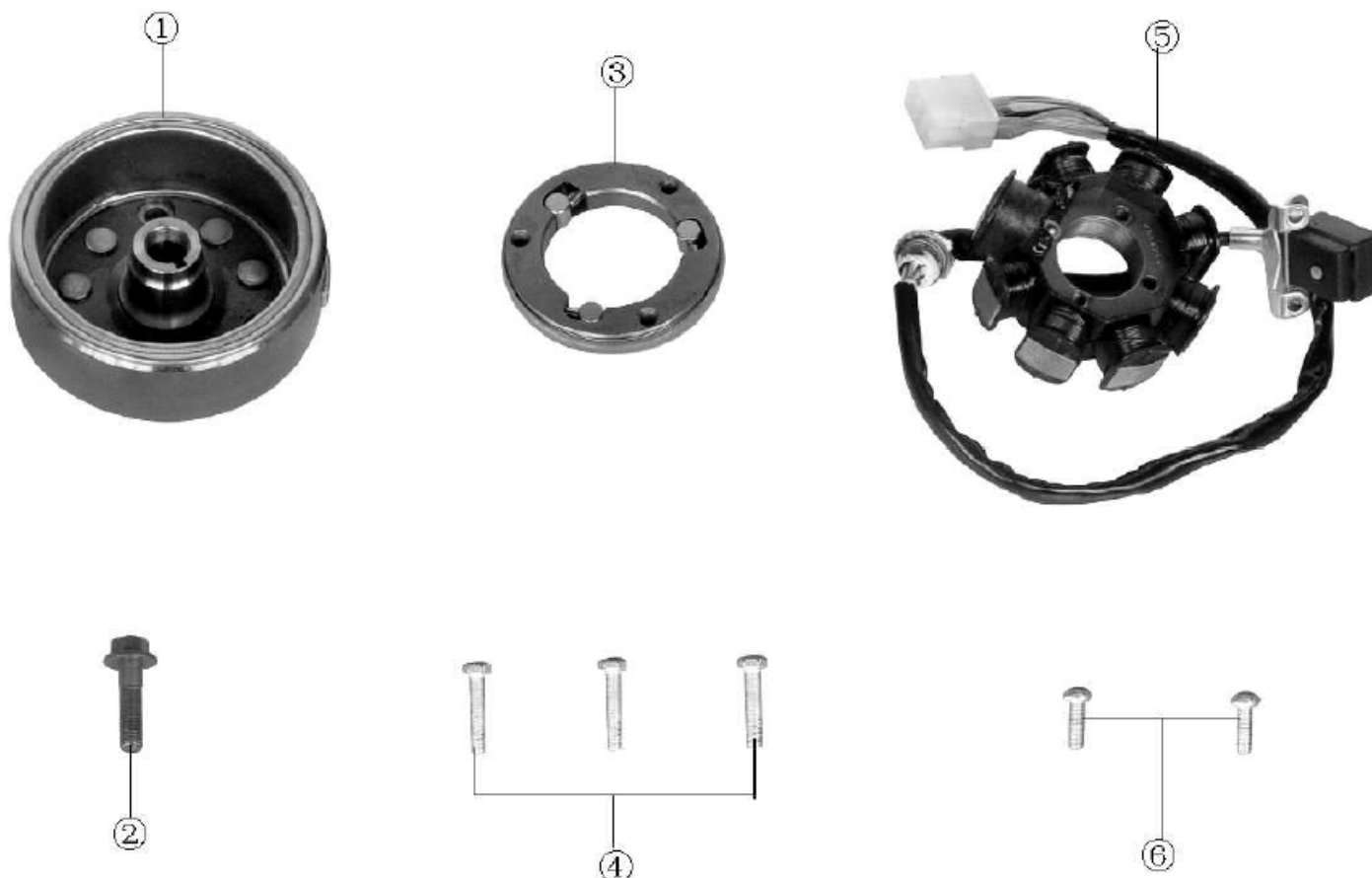
REF NO.	PARTS NO.	EN DESCRIPTION	VPC/komad	MPC/komad
P8-1	24300-I006-00000	Gear Changing Axle Comp	84,96 kn	103,65 kn
P8-2	24202-I006-0500	Pentagon Plate	50,88 kn	62,07 kn
P8-3	B000930006000000D	Spring Wahser 6	7,56 kn	9,22 kn
P8-4	B05783000600257	Bolt M6x25	5,04 kn	6,15 kn
P8-5	24304-I006-0000	Firm Plate Spring	6,30 kn	7,69 kn
P8-6	2434A-I008-0000	Firm Plate Comp	27,72 kn	33,82 kn
P8-7	B05783000600207	Bolt M6x20	6,30 kn	7,69 kn
P8-8	14004-I042-0000	Cover, Oil Pump Sprocket	21,42 kn	26,13 kn
P8-9	B166740A0600127	Bolt M6x12	5,04 kn	6,15 kn
P8-10	B061770106000090B	Nut M6	7,56 kn	9,22 kn
P8-11	B166740A0600327	Bolt M6x32	6,30 kn	7,69 kn
P8-12	14100-J079-0000	Oil Pump Comp	82,80 kn	101,02 kn
P8-13	1432B-I015-0000	Oil Pump Gear	28,98 kn	35,36 kn
P8-14	14103-I042-0000	Oil Pump Chain	94,32 kn	115,07 kn
P8-15	14001-I042-0000	Primary Sprocket, Oil Pump	81,48 kn	99,41 kn

Tampa lateral esquerda



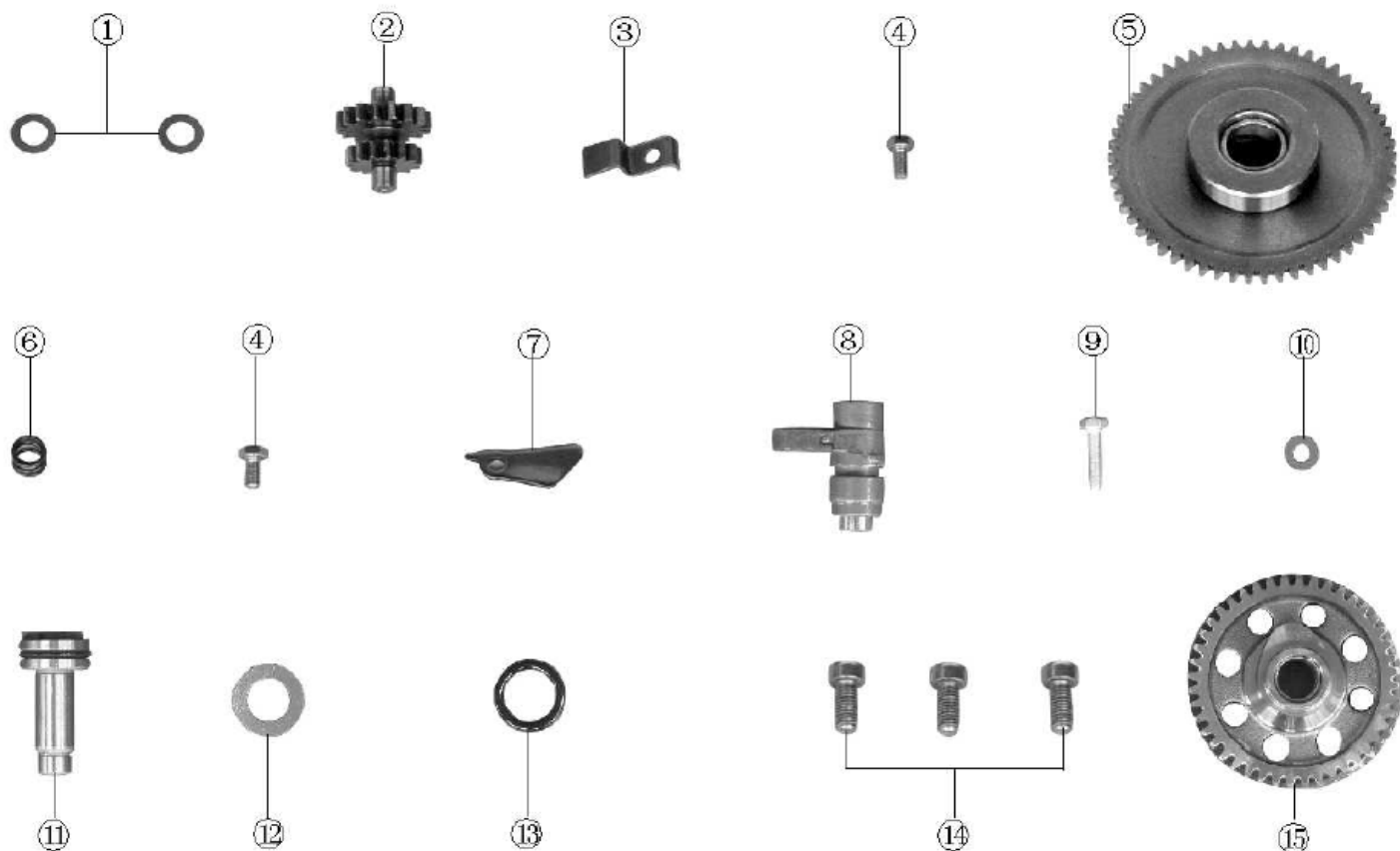
REF NO.	PARTS NO.	EN DESCRIPTION	VPC/komad	MPC/komad
P9-1	12307-I008-0000	DECORATE COVER,CRANKCASE FR COVER	74,76 kn	91,21 kn
P9-2	90101-10274000265	O-RING 27.4×2.65	2,52 kn	3,07 kn
P9-3	B00818000600122	SCREW M6×12	5,04 kn	6,15 kn
P9-4	12308-I008-1000	cover,double gear	100,80 kn	122,98 kn
P9-5	90101-10620000300	O-RING 62×3	5,04 kn	6,15 kn
P9-6	B166740A0600207	BOLT M6×20	5,04 kn	6,15 kn
P9-7	12301-I008-0000	CRANKCASE FR COVER	184,82 kn	225,49 kn
P9-8	90204-I008-0000	GASKET, CRANKCASE FR COVER	10,08 kn	12,30 kn
P9-9	21402-I008-0000	AXLE,TWIN GEAR	23,94 kn	29,21 kn
P9-10	93301-51050518000	WASHER	2,52 kn	3,07 kn
P9-11	21421-I008-00000	DOUBLE GEAR I	114,48 kn	139,67 kn
P9-12	B166740A0600257	BOLT M6×25	5,04 kn	6,15 kn
P9-13	B166740A0600407	BOLT M6×40	7,56 kn	9,22 kn
P9-14	B166740A0600507	BOLT M6×50	7,56 kn	9,22 kn
P9-15	12303-G011-0000	VIEW HOLE COVER	26,46 kn	32,28 kn
P9-16	90101-10132000265	O-RING 13×2.65	2,52 kn	3,07 kn
P9-17	91521-08001400000	PIN 8×14	1,26 kn	1,54 kn

Magneto



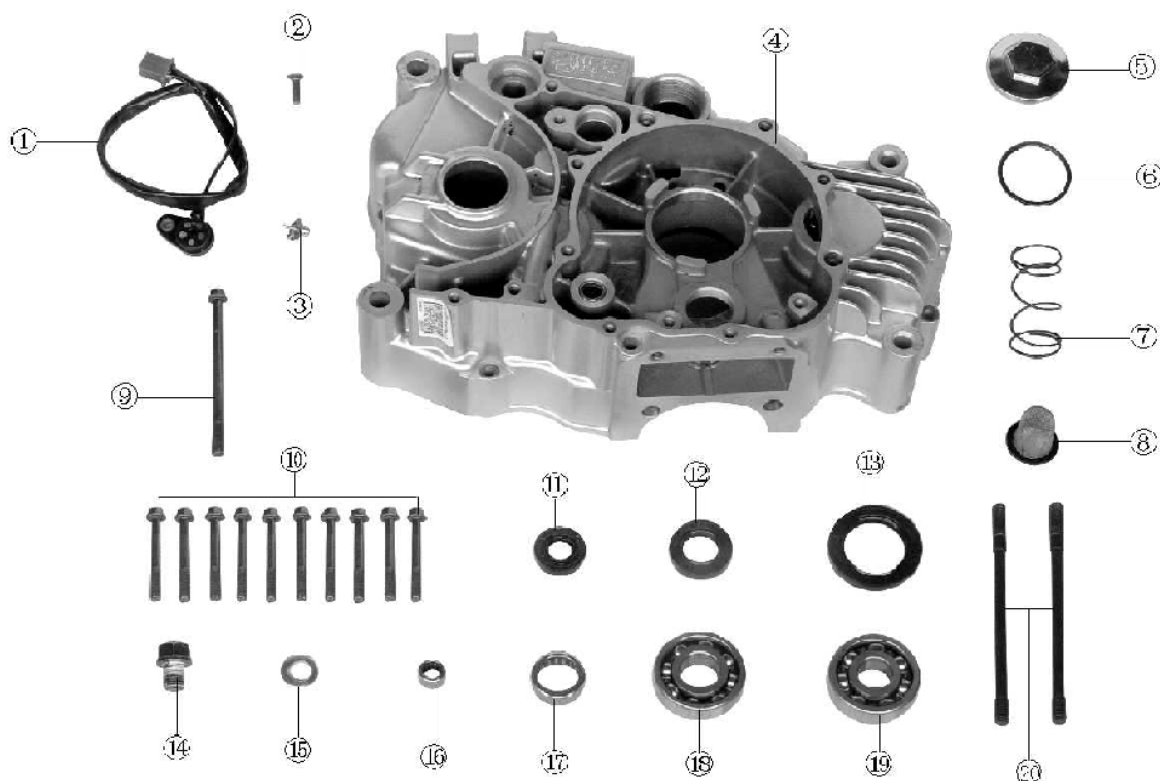
REF NO.	PARTS NO.	EN DESCRIPTION	VPC/komad	MPC/komad
P10-1	82130-I008-0100	ROTOR ASSEMBLY,MAGNETO	162,18 kn	197,86 kn
P10-2	91106-I008-0000	Bolt M10×35	18,90 kn	23,06 kn
P10-3	21300-I008-0000	Starting Clutch Assy	77,85 kn	94,98 kn
P10-4	B05783000500257	Bolt M5×25	3,78 kn	4,61 kn
P10-5	82120-I008-0200	STATOR ASSEMBLY,MAGNETO	158,81 kn	193,75 kn
P10-6	B00823000500162	Screw M5×16	5,04 kn	6,15 kn

Embreagem de partida



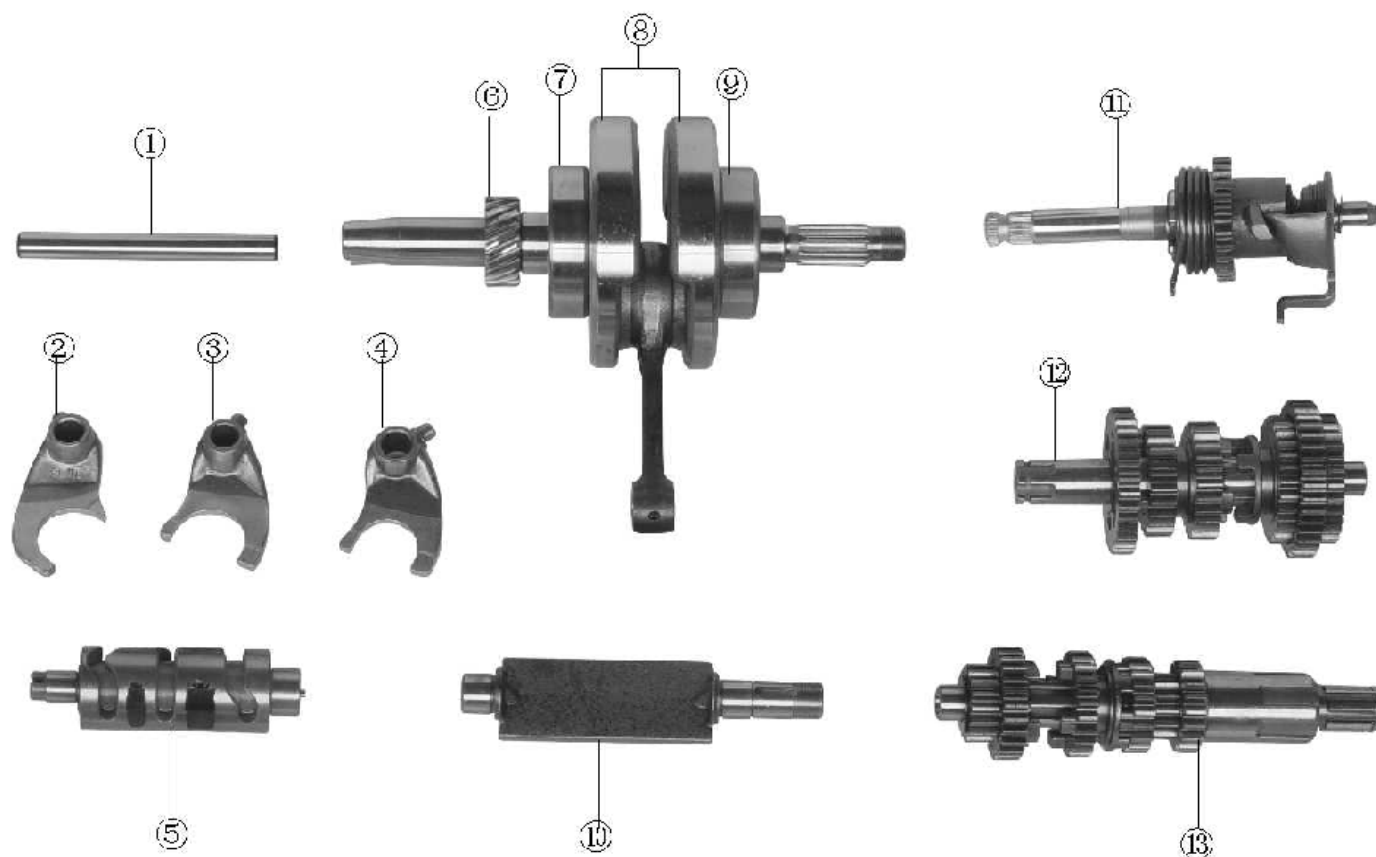
REF NO.	PARTS NO.	EN DESCRIPTION	VPC/komad	MPC/komad
P11-1	93301-51050518000	Washer 10.5x0.5x18,Twin Gear	2,52 kn	3,07 kn
P11-2	21401-I008-0000	Twin Gear II	88,56 kn	108,04 kn
P11-3	12102-I008-0000	Firm Plate,Start Sprocket	6,30 kn	7,69 kn
P11-4	B05783000600127	Bolt M6x12	5,04 kn	6,15 kn
P11-5	21422-I008-0100	STARTING MOTORDRIVEN SPROCKET	130,09 kn	158,71 kn
P11-6	92102-000HK101410	Bearing HK101410	18,90 kn	23,06 kn
P11-7	15108-I008-0000	Block Plate,Valve Cam	7,56 kn	9,22 kn
P11-8	1213B-I008-0000	Pressing Pin Body Comp	53,76 kn	65,59 kn
P11-9	B05783000500257	Bolt M6x25	5,04 kn	6,15 kn
P11-10	93301-60671014400	WASHER 6.7x1x14.4	2,52 kn	3,07 kn
P11-11	15105-J034-0000	Axle,Valve Cam	48,96 kn	59,73 kn
P11-12	93301-51421024000	WASHER 14.2x1x24	6,30 kn	7,69 kn
P11-13	90101-20138000250	O ring 13.8x2.5	17,64 kn	21,52 kn
P11-14	B00070011800187	Bolt M8x18	6,30 kn	7,69 kn
P11-15	1510A-I008-0000	Secondary Timing Gear	130,98 kn	159,80 kn

Carcaça Esquerda



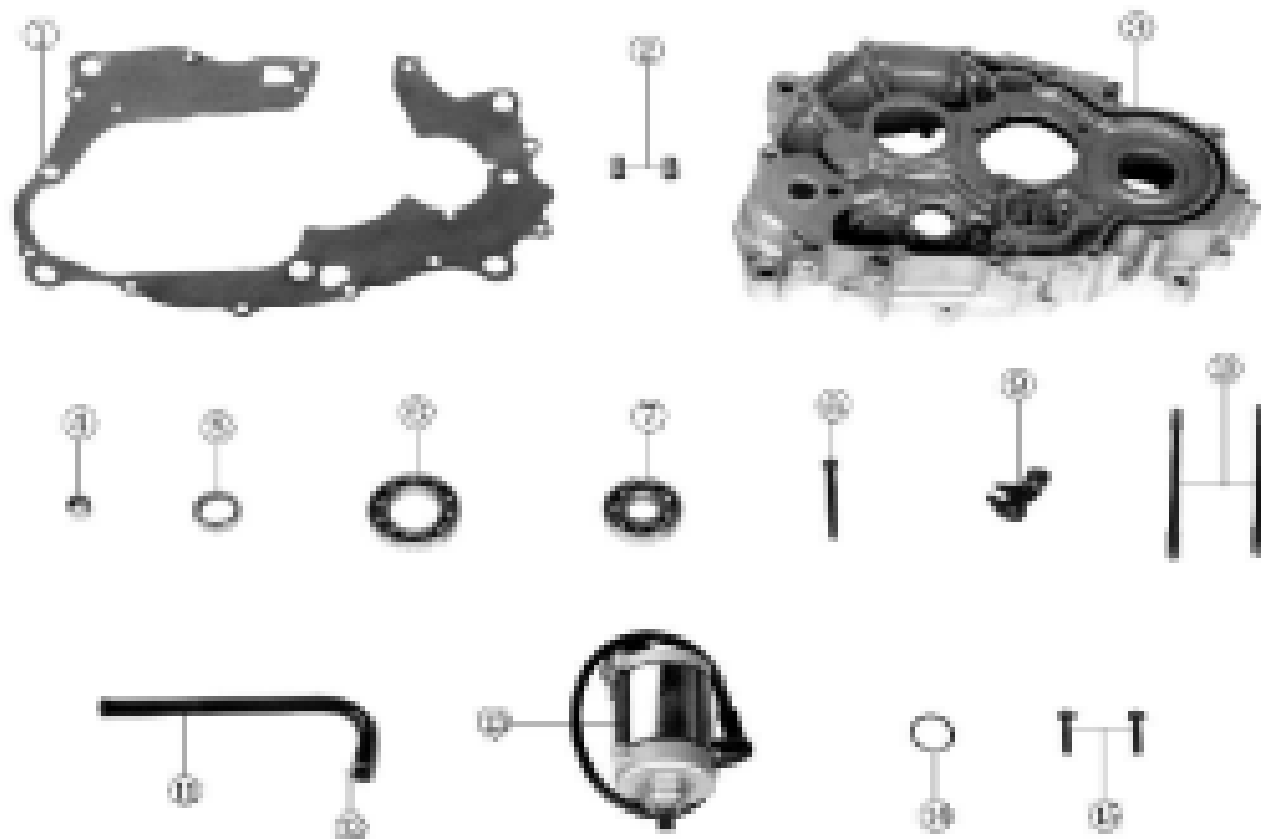
REF NO.	PARTS NO.	EN DESCRIPTION	VPC/komad	MPC/komad
P12-1	88031-I008-160045	Wire Comp,Gear Indicator	50,40 kn	61,49 kn
P12-2	B008190106002020	Screw M6×20	5,04 kn	6,15 kn
P12-3	88004-I008-0100	Contact,Gear Indicator	44,16 kn	53,88 kn
P12-4	1212B-J079-010089	L Crankcase Body	689,42 kn	841,10 kn
P12-5	11229-I006-0000	Cover,Valve Box	50,88 kn	62,07 kn
P12-6	90101-10335000300	O Ring 33.5×3	35,28 kn	43,04 kn
P12-7	14221-I006-0000	Spring,Oil Filtrate Net	5,04 kn	6,15 kn
P12-8	1431B-I006-0000	Oil Filtrate Net	17,64 kn	21,52 kn
P12-9	B166740A0600957	Bolt M6×95	11,34 kn	13,83 kn
P12-10	B166740A0600507	Bolt M6×50	7,56 kn	9,22 kn
P12-11	90301-I006-0100	Oil Seal 14×28×7,Gear Changing Pedal	23,94 kn	29,21 kn
P12-12	90303-I006-0100	Oil Seal 20×34×7,Counter Shaft	26,46 kn	32,28 kn
P12-13	90302-I008-0100	Oil Seal 34×50×7,Crankshaft	30,72 kn	37,48 kn
P12-14	91103-I008-00000	Lubrication Discharge Plug M12×1.5	17,64 kn	21,52 kn
P12-15	93301-71242020000	Al Wahser 12.5×1.5×20	1,26 kn	1,54 kn
P12-16	92102-000HK101410	Needle Bearing HK101410	18,90 kn	23,06 kn
P12-17	92102-00000006202	Needle Bearing 6202	73,08 kn	89,16 kn
P12-18	92102-00000006203	Bearing 6203	60,48 kn	73,79 kn
P12-19	92102-00000006204	Bearing 6204	69,72 kn	85,06 kn
P12-20	91102-I008-0000	Double Head Bolt B,Cylinder	25,20 kn	30,74 kn

Virabrequim



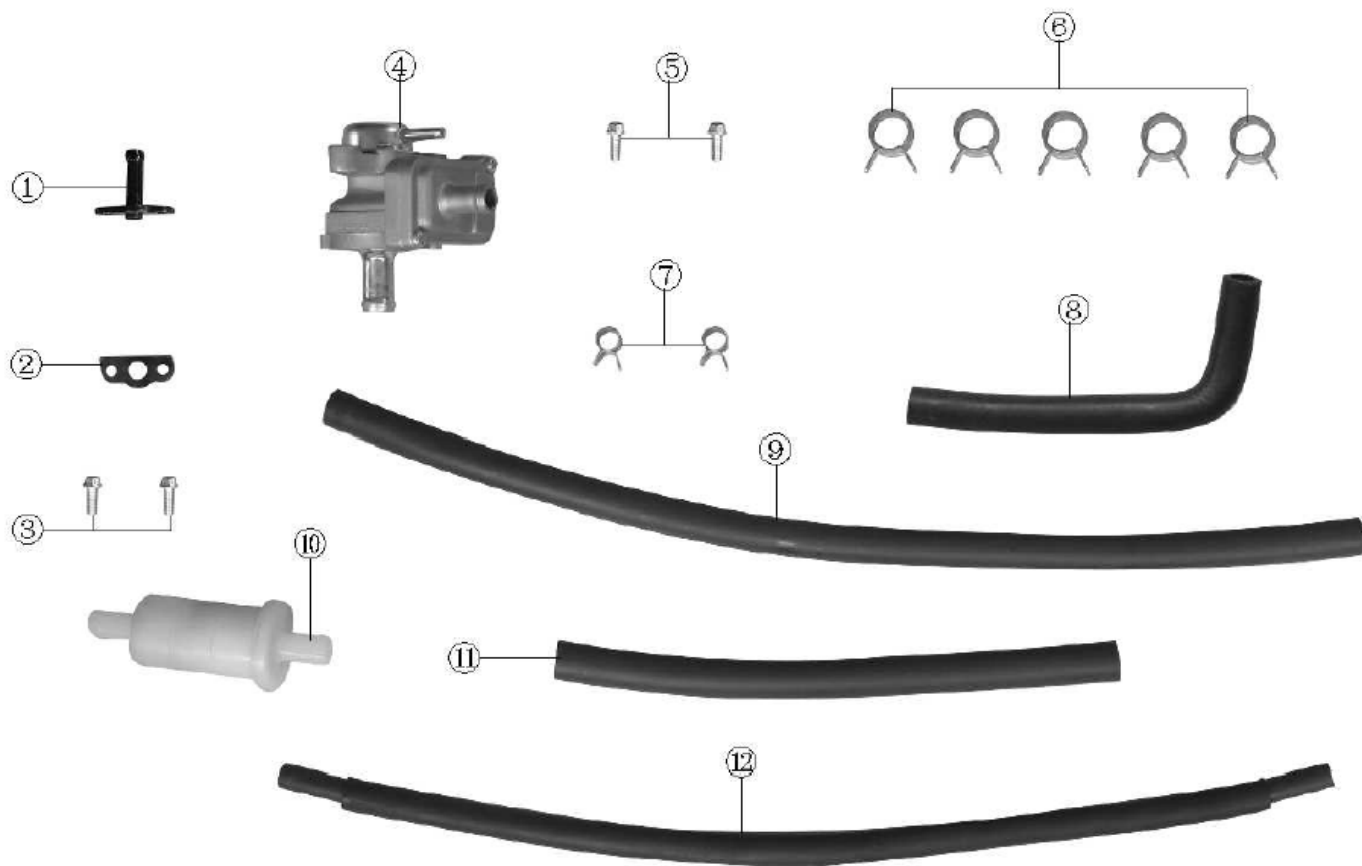
REF NO.	PARTS NO.	EN DESCRIPTION	VPC/komad	MPC/komad
P13-1	24107-I006-0000	Gear Fork Axle	29,76 kn	36,31 kn
P13-2	24105-I006-0000	L Fork, Countershaft	50,40 kn	61,49 kn
P13-3	24104-I006-0000	R Fork, Countershaft	50,40 kn	61,49 kn
P13-4	24106-I006-0000	Mainshaft Fork	50,40 kn	61,49 kn
P13-5	24213-I008-0000	Gear Shaft Drum Assy	79,20 kn	96,62 kn
P13-6	23101-I042-0000	Primary Gear	86,40 kn	105,41 kn
P13-7	92102-063-28RS-P5	Bearing 63-28RS/P5	153,62 kn	187,42 kn
P13-8	13220-I042-0000	Connection Rod(Composed of Three parts)	280,91 kn	342,71 kn
P13-9	92102-00063-28-P5	Bearing 63/28/P5	112,78 kn	137,59 kn
P13-10	13301-I042-0000	Balancer	190,64 kn	232,58 kn
P13-11	21100-I008-0200	Start Axle Assy	171,76 kn	209,54 kn
P13-12	23220-I008-0000	Mainshaft Assy	183,60 kn	223,99 kn
P13-13	23240-I008-0000	Countershaft Assy	183,60 kn	223,99 kn

Carcaça Direita do motor



REF NO.	PARTS NO.	EN DESCRIPTION	VPC/komad	MPC/komad
P14-1	90208-I042-0000	Gasket,Crankcase	34,56 kn	42,16 kn
P14-2	91521-1000140000	Pin 10×14	2,52 kn	3,07 kn
P14-3	1222B-J079-0000	R Crankcase Body Comp	485,59 kn	592,41 kn
P14-4	92102-000N4152312	Bearing N4152312	35,52 kn	43,33 kn
P14-5	92102-000N4212810	Bearing N4212810	62,16 kn	75,84 kn
P14-6	92102-00000006006	Bearing 6006	96,48 kn	117,71 kn
P14-7	92102-00000006303	Bearing 6303	74,88 kn	91,35 kn
P14-8	91183-I008-0000	Bolt M6×55	13,86 kn	16,91 kn
P14-9	22422-I006-00010	Bracket,Clutch Cable	17,64 kn	21,52 kn
P14-10	91101-I008-0000	Bolt A,Cylinder	25,20 kn	30,74 kn
P14-11	12105-I008-0000	Pipe	25,20 kn	30,74 kn
P14-12	91405-I006-0000	Circlip Φ15.5	2,52 kn	3,07 kn
P14-13	82200-I008-0000	Motor,EI Start	247,25 kn	301,64 kn
P14-14	90101-10240000300	O Ring 24×3	10,08 kn	12,30 kn
P14-15	B057890006002870	Bolt M6×28	8,82 kn	10,76 kn

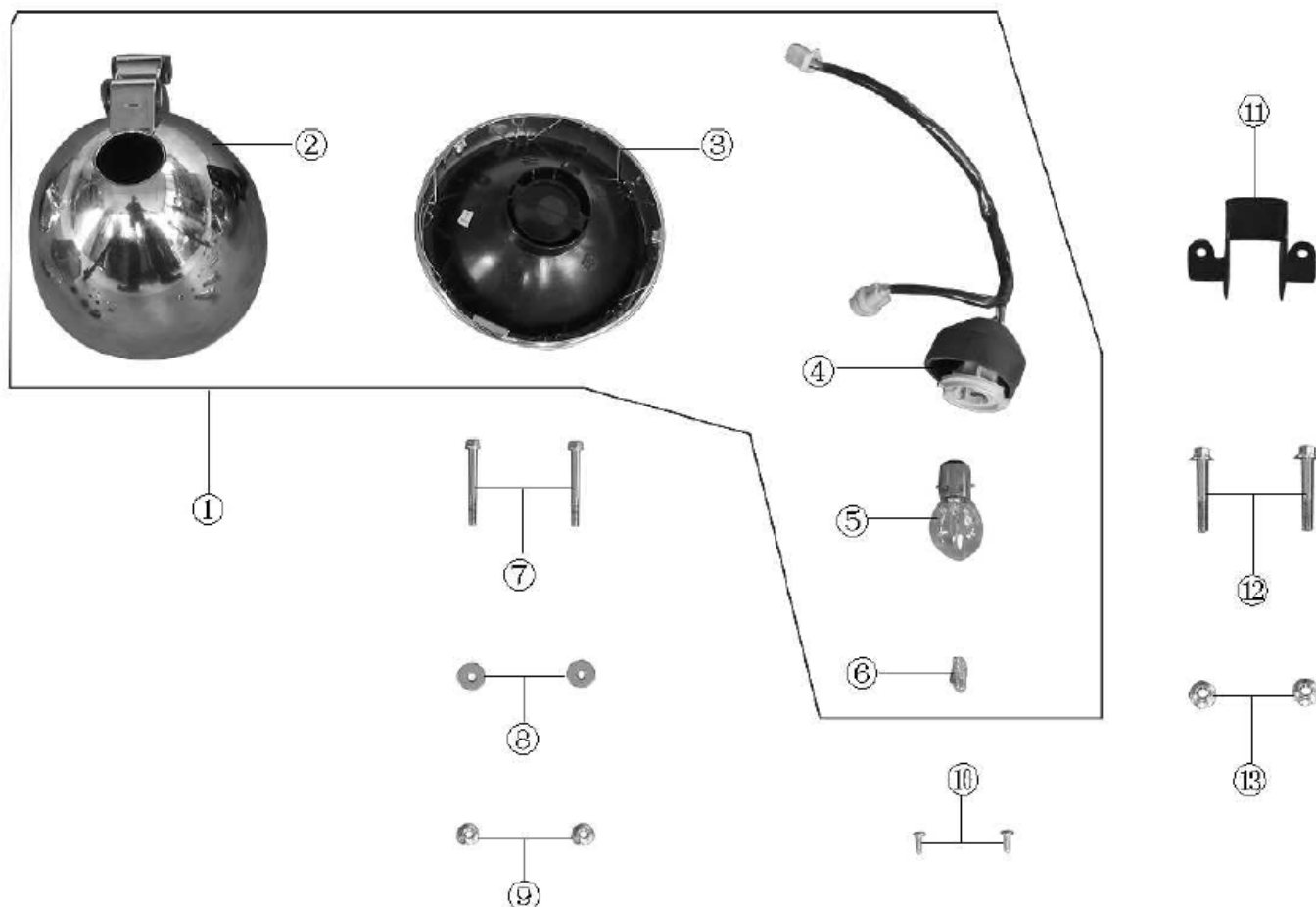
Antipoluição



REF NO.	PARTS NO.	EN DESCRIPTION	VPC/komad	MPC/komad
P15-1	1809B-I008-0000	PIPE,INLET AIR	101,25 kn	123,53 kn
P15-2	90268-DA80-0000	GASKET	5,04 kn	6,15 kn
P15-3	B0166744010600127	BOLT M6×16	6,30 kn	7,69 kn
P15-4	18090-I008-0000	AIR PUMP	388,91 kn	474,48 kn
P15-5	B05783000600207	BOLT M6×20	6,30 kn	7,69 kn
P15-6	18097-I008-0100	CIRCLIP II	8,82 kn	10,76 kn
P15-7	18097-I008-0000	CIRCLIP I	10,08 kn	12,30 kn
P15-8	18092-I008-0100	PIPE,INLET AIR I	34,02 kn	41,50 kn
P15-9	16156-I008-0100	SECONDARY INDUCTION BEND HOSE II	77,04 kn	93,99 kn
P15-10	16170-I008-0000	SECONDARY AIR FILTER	54,72 kn	66,76 kn
P15-11	16156-I008-0000	SECONDARY INDUCTION HOSE I	50,88 kn	62,07 kn
P15-12	18092-I008-0000	NEGATIVE PRESSURE PIPE	104,40 kn	127,37 kn

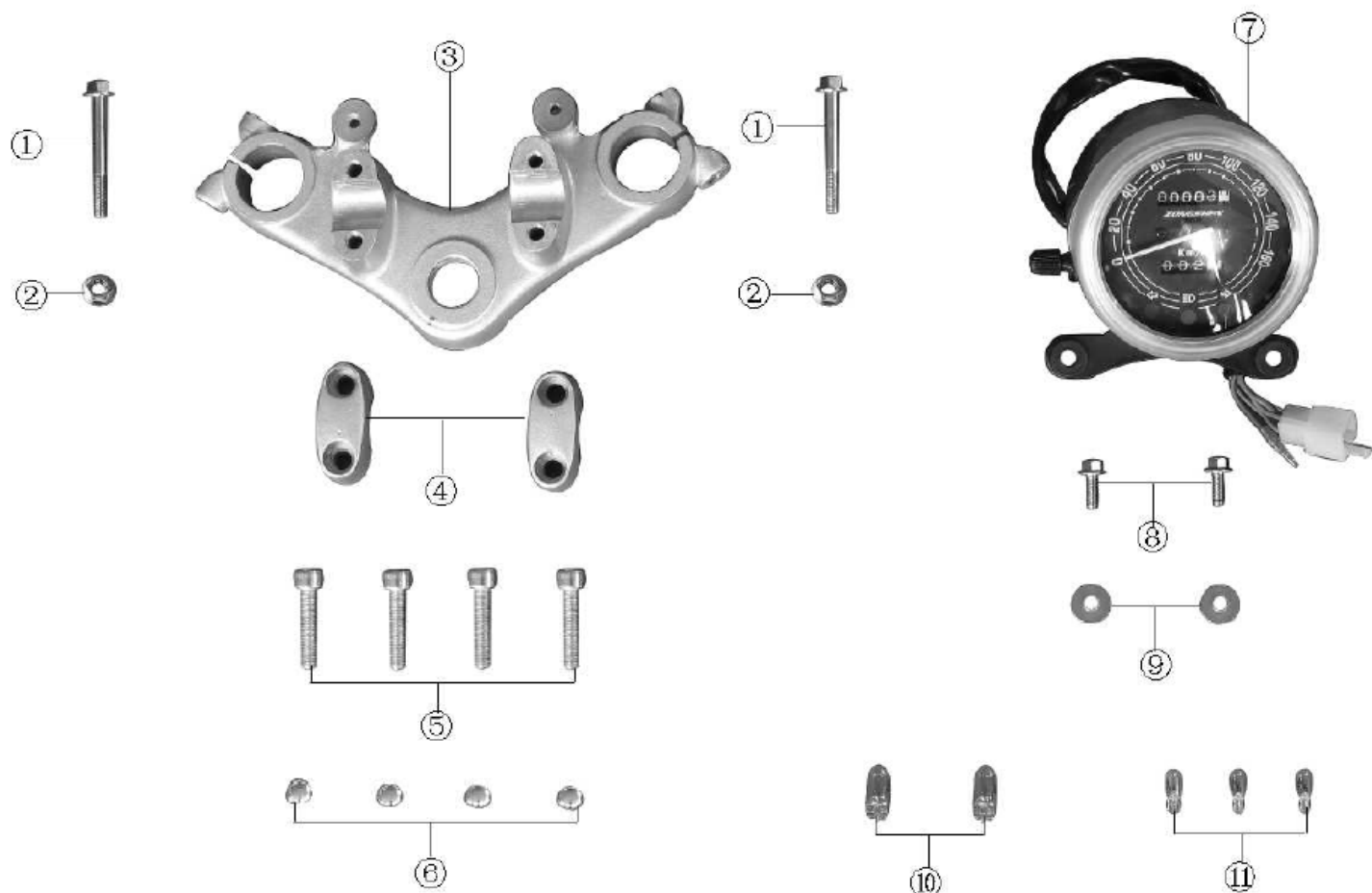
Chassis

Farol



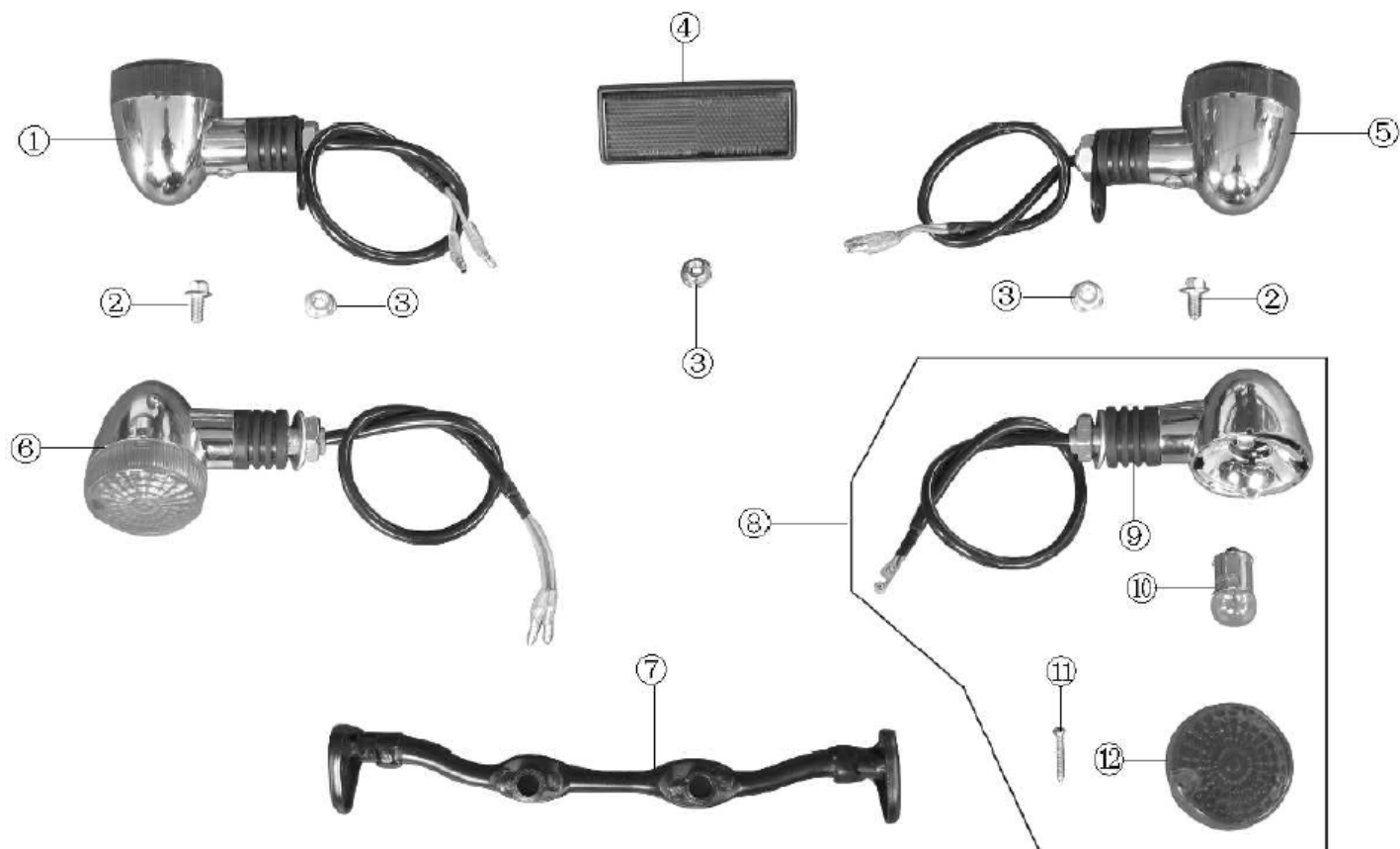
REF NO.	PARTS NO.	EN DESCRIPTION	VPC/komad	MPC/komad
P16-1	86100-I552-0100	HEAD LIGHT	495,44 kn	604,44 kn
P16-2	86103-I552-0000	LIGHTING TROUGH	156,37 kn	190,77 kn
P16-3	86104-I552-0000	LENS, HEADLAMP	233,06 kn	284,34 kn
P16-4	86111-I552-0000	WIRENESS, HEADLIGHT	138,53 kn	169,00 kn
P16-5	86160-I552-0000	BULB, HEADLIGHT 12V35W/35W	90,00 kn	109,80 kn
P16-6	86170-I552-0000	BULB, POSITION LIGHT 12V5W	35,52 kn	43,33 kn
P16-7	B16674010600507	BOLT M6×50	10,08 kn	12,30 kn
P16-8	B0009600060000K	WASHER Φ6	1,26 kn	1,54 kn
P16-9	B06177010600006	NUT M6	7,56 kn	9,22 kn
P16-10	9A131-1050-0125	SCREW M5×12	6,30 kn	7,69 kn
P16-11	86193-I552-000066	BRACKET, HEAD LIGHT	34,56 kn	42,16 kn
P16-12	B16674010800507	BOLTM8×50	10,08 kn	12,30 kn
P16-13	B06177010800006	NUT M8	7,56 kn	9,22 kn

Painel e mesa superior



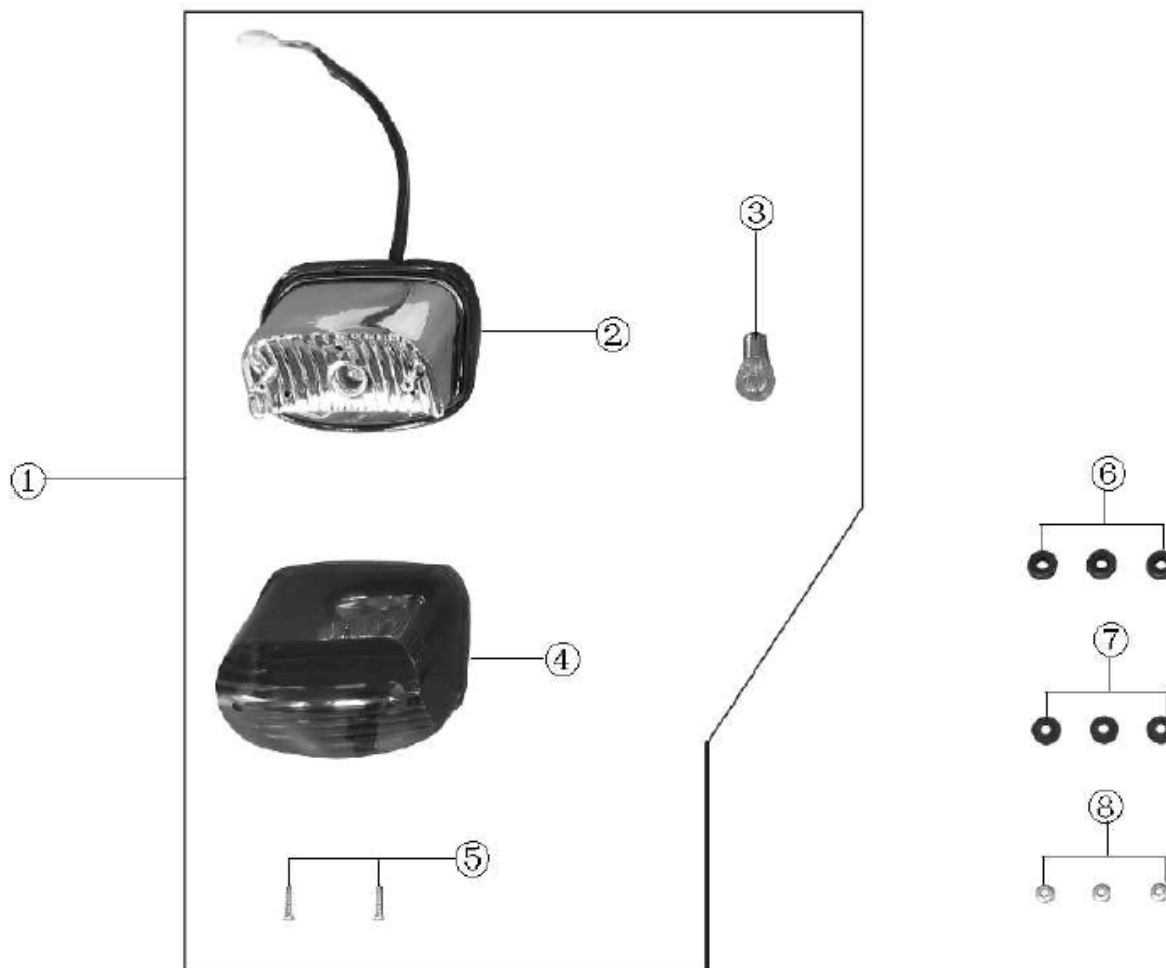
REF NO.	PARTS NO.	EN DESCRIPTION	VPC/komad	MPC/komad
P17-1	B16674000700547	BOLT M7×54	23,94 kn	29,21 kn
P17-2	B06187000700006	NUT M7	7,56 kn	9,22 kn
P17-3	71101-I552-0000	UPPER CONNECT PLATE	205,33 kn	250,50 kn
P17-4	72101-I552-0000	CLAMP,STEERING BAR	54,72 kn	66,76 kn
P17-5	B00070010800357	SCREW M8×35	6,30 kn	7,69 kn
P17-6	70086-I552-0000	BUCKLE DECORATE CLAMP,STEERING BAR	39,36 kn	48,02 kn
P17-7	87100-I552-0000	ASSEMBLY,METER	205,33 kn	250,50 kn
P17-8	B16674000600207	METER BLT M6×20	7,56 kn	9,22 kn
P17-9	91303-9060401800G	WASHER Φ6	5,04 kn	6,15 kn
P17-10	87009-I552-0000	BULB 12V3W	15,12 kn	18,45 kn
P17-11	87124-I552-0000	BULB 12V1.7W	15,12 kn	18,45 kn

Piscas



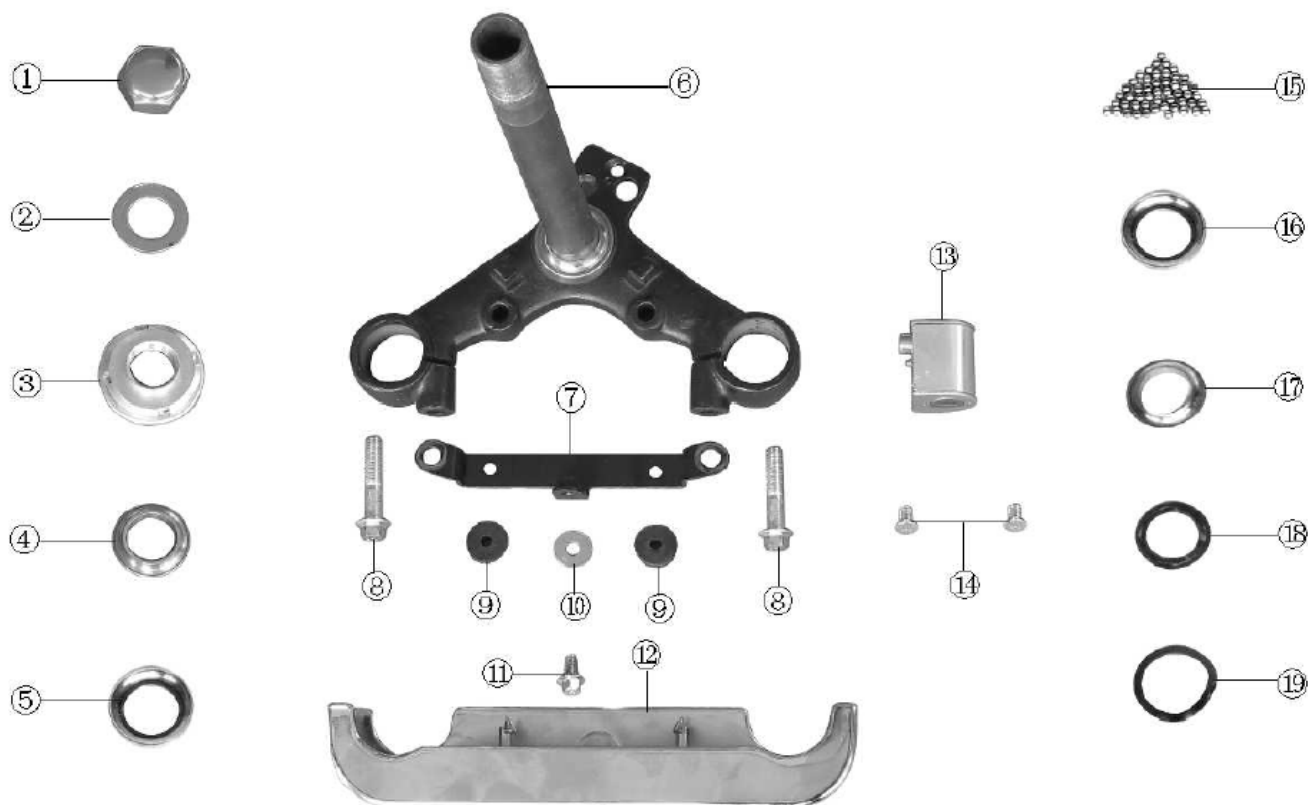
REF NO.	PARTS NO.	EN DESCRIPTION	VPC/komad	MPC/komad
P18-1	86500-I552-0000	L RR TURNNING LIGHT	143,41 kn	174,96 kn
P18-2	B16674010600127	BOLT M6×12	6,30 kn	7,69 kn
P18-3	B06177010600006	NUT M6	8,82 kn	10,76 kn
P18-4	85830-I552-0000	REAR REFLECTOR	33,60 kn	40,99 kn
P18-5	86600-I552-0000	R RR TURNNING LIGHT	143,41 kn	174,96 kn
P18-6	86300-I552-0000	FR L TURNNING LIGHT	143,41 kn	174,96 kn
P18-7	86305-I552-0000	BASKET,FRONT TURNSIGNAL LIGHT	66,36 kn	80,96 kn
P18-8	86400-I552-0000	FR R TURNNING LIGHT	143,41 kn	174,96 kn
P18-9	86401-I552-0000	REFLECTER,FRONT RIGHT TURNING SIGNAL LIGHT	112,32 kn	137,03 kn
P18-10	86340-I552-0000	BULB,TUTNING SIGNAL LIGHT 12V10W	41,28 kn	50,36 kn
P18-11	B008450003202000L	SELF TAPPING SCREW ST3.2×20	6,30 kn	7,69 kn
P18-12	86406-I552-0000	LENS,FRONT RIGHT TURNING LIGHT	86,40 kn	105,41 kn

Lanterna traseira



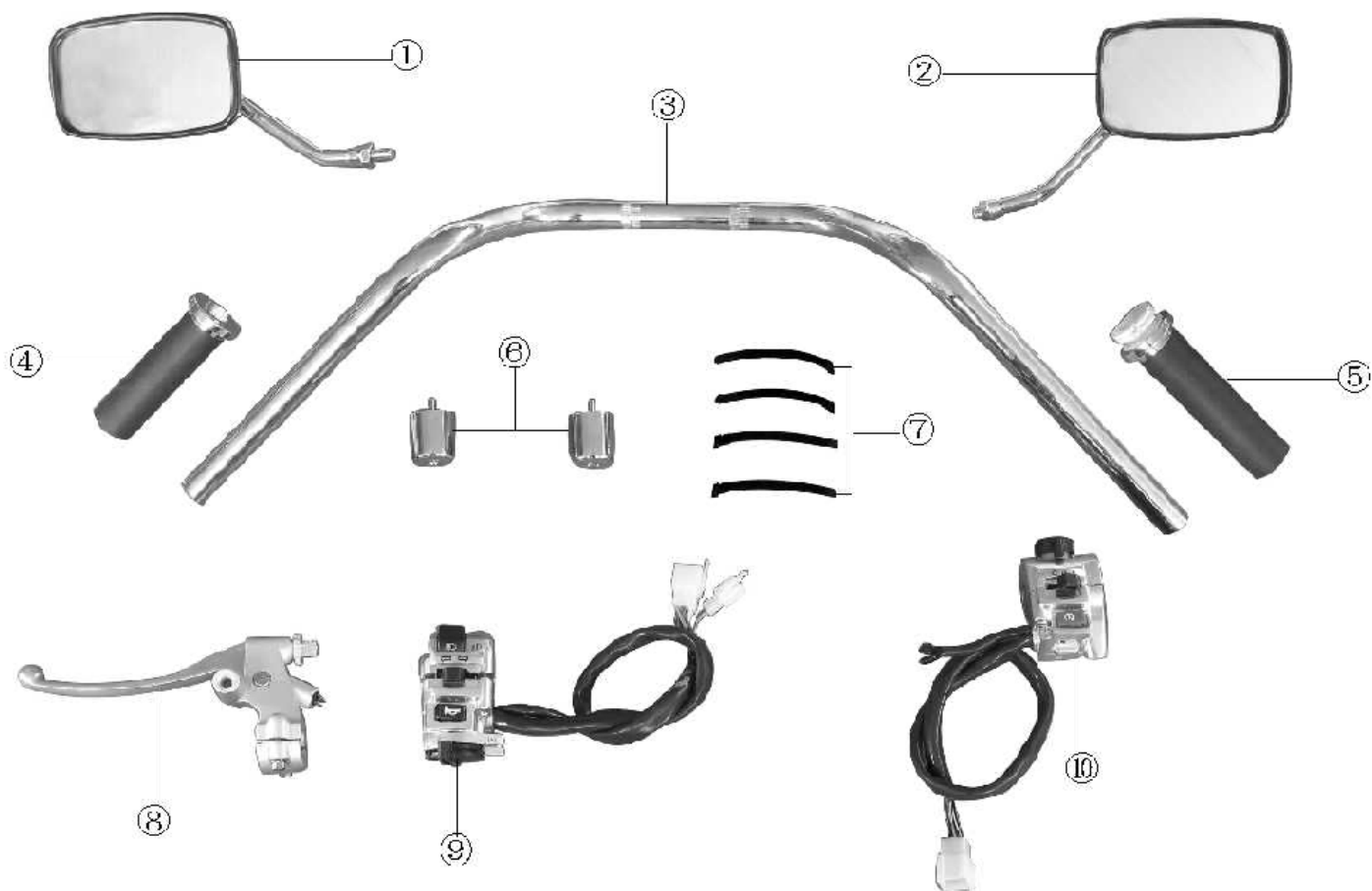
REF NO.	PARTS NO.	EN DESCRIPTION	VPC/komad	MPC/komad
P19-1	86200-I552-0100	TAIL LIGHT COMP	236,23 kn	288,20 kn
P19-2	86206-I552-0000	TAIL LIGHT HOLDER	209,20 kn	255,22 kn
P19-3	86260-I552-0000	BULB, TAIL LIGHT 12V21W5W	45,12 kn	55,05 kn
P19-4	86204-I552-0000	TAIL LIGHT CASE	118,99 kn	145,17 kn
P19-5	B008450004202000L	SCREW ST4.2×20	5,04 kn	6,15 kn
P19-6	93111-I552-0000	RUBBER RING 6	7,56 kn	9,22 kn
P19-7	91303-960401800H	WASHER $\phi 6 \times \phi 18 \times 1-4$	7,56 kn	9,22 kn
P19-8	B061770105000060X	NUT M5	7,56 kn	9,22 kn

Mesa inferior



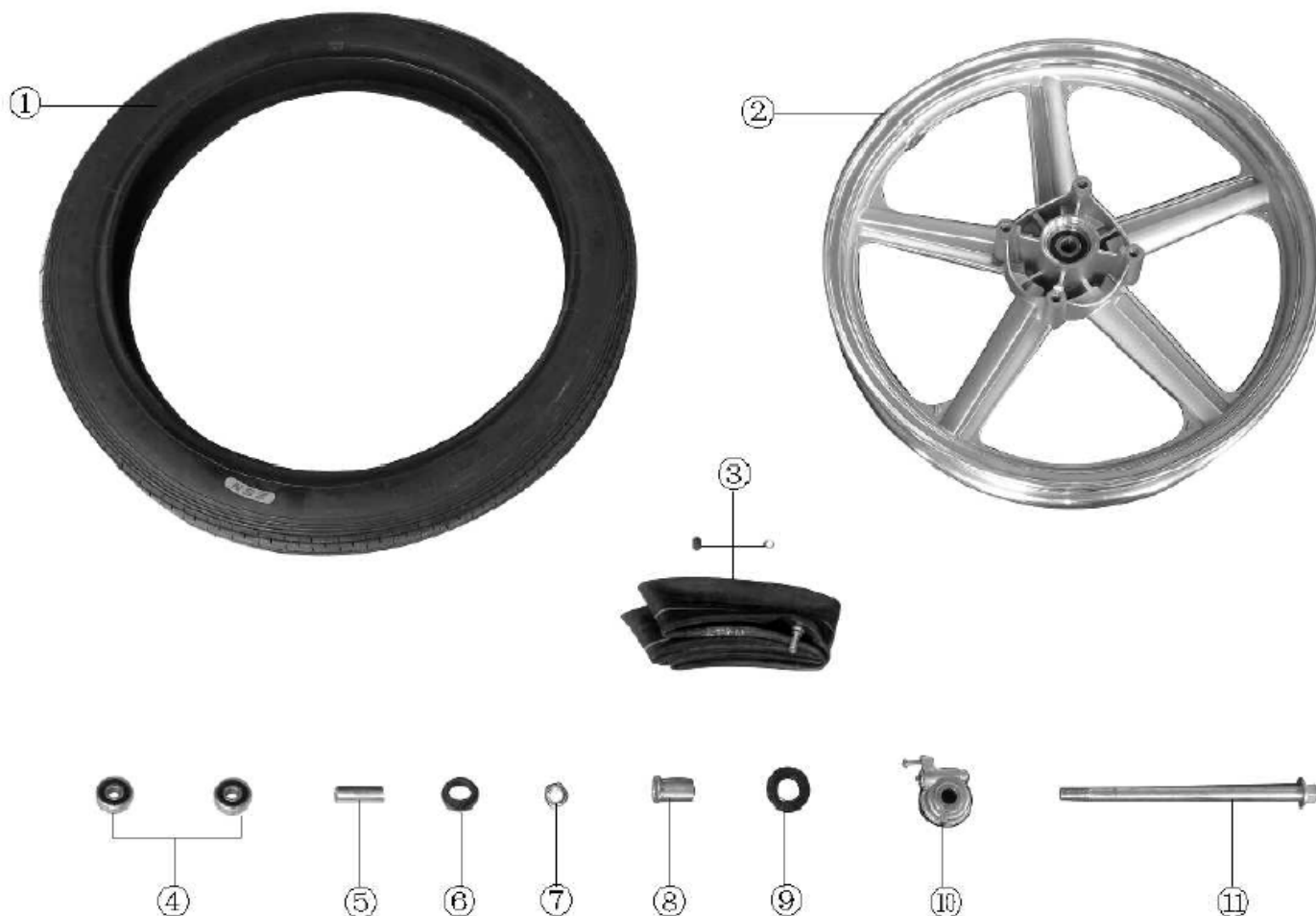
REF NO.	PARTS NO.	EN DESCRIPTION	VPC/komad	MPC/komad
P20-1	71104-I552-0000	NUT	34,56 kn	42,16 kn
P20-2	71123-I552-0000	PLAIN WAHSER	15,12 kn	18,45 kn
P20-3	71105-I552-0000	ADJUST SCREW	46,08 kn	56,22 kn
P20-4	71201-I552-0000	UPPER RACE BEARING	31,50 kn	38,43 kn
P20-5	71203-I552-0000	UPPER COLLAR BEARING	32,76 kn	39,97 kn
P20-6	71100-I552-0000	STEERING STEM ASSY	345,03 kn	420,94 kn
P20-7	71162-I552-0000	BRACKET, SCUTCHEON FRONT FORK	70,56 kn	86,08 kn
P20-8	B16674000800407	BOLT M8×40	5,04 kn	6,15 kn
P20-9	93111-I552-0000	RUBBER RING 6	7,56 kn	9,22 kn
P20-10	B0009600060000K0G	WASHERΦ 6	5,04 kn	6,15 kn
P20-11	B16674010600127	BOLT M6×12	6,30 kn	7,69 kn
P20-12	71109-I552-0000	DECORATIVEPART,STEERING STEM	72,90 kn	88,94 kn
P20-13	71170-I552-0000	LOCK,STEERING HANDLE	75,15 kn	91,68 kn
P20-14	B008190006000870X	SCREW M6×8	6,30 kn	7,69 kn
P20-15	71205-0000-0000	STEEL BALL Φ4.7625	0,00 kn	0,00 kn
P20-16	71204-I552-0000	LOWER COLLAR BEARING	32,76 kn	39,97 kn
P20-17	71202-I552-0000	LOWER RACE BEARING	35,28 kn	43,04 kn
P20-18	71123-I552-0000	PLAIN WASHER	15,12 kn	18,45 kn
P20-19	71124-I552-0000	ANTIDUST RING, STEERING STEM	34,56 kn	42,16 kn

Guidon



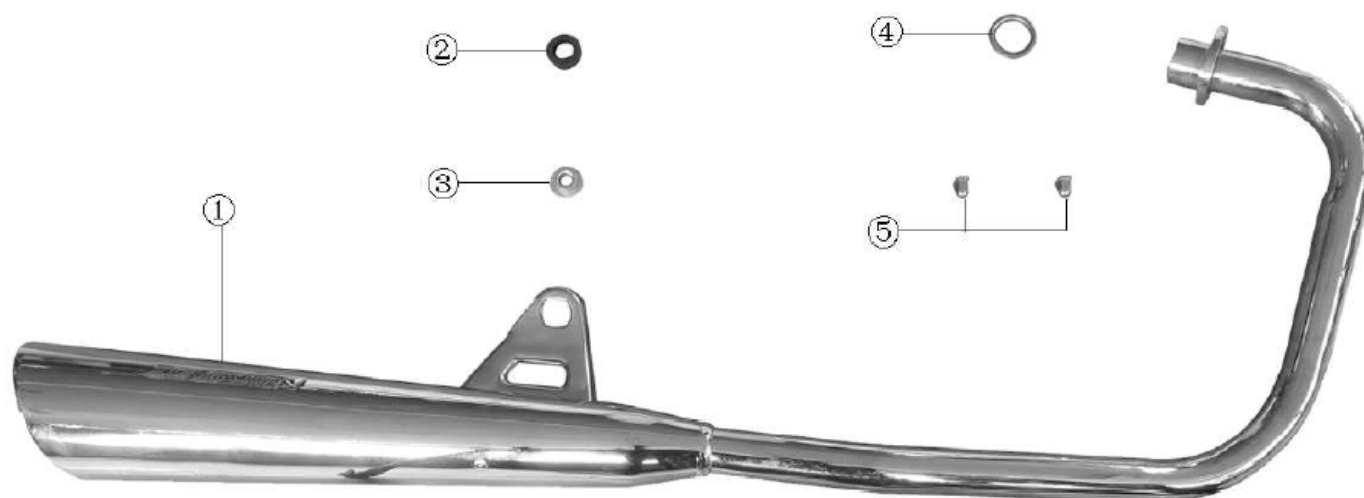
REF NO.	PARTS NO.	EN DESCRIPTION	VPC/komad	MPC/komad
P21-1	69110-I552-0000	L REAR VIEW MIRROR	133,20 kn	162,50 kn
P21-2	69120-I552-0000	R REAR VIEW MIRROR	133,20 kn	162,50 kn
P21-3	72100-I552-0000	HANDLE PIPE	117,22 kn	143,00 kn
P21-4	72010-I552-0000	GUM COVER , L. HANDLE	80,64 kn	98,38 kn
P21-5	72020-I552-000065	GUM COVER , R. HANDLE	86,40 kn	105,41 kn
P21-6	72119-I552-0000	BLANCER,HANDLE BAR	80,64 kn	98,38 kn
P21-7	08216-0000-0000	BANDAGE L=130mm	1,26 kn	1,54 kn
P21-8	72209-I552-0000	CLUTCH HANDLE LEVER	180,64 kn	220,38 kn
P21-9	72201-I552-0000	L. SWITCH ASSY	188,14 kn	229,53 kn
P21-10	72301-I552-0000	R. SWITCH ASSY	167,54 kn	204,40 kn

Roda dianteira



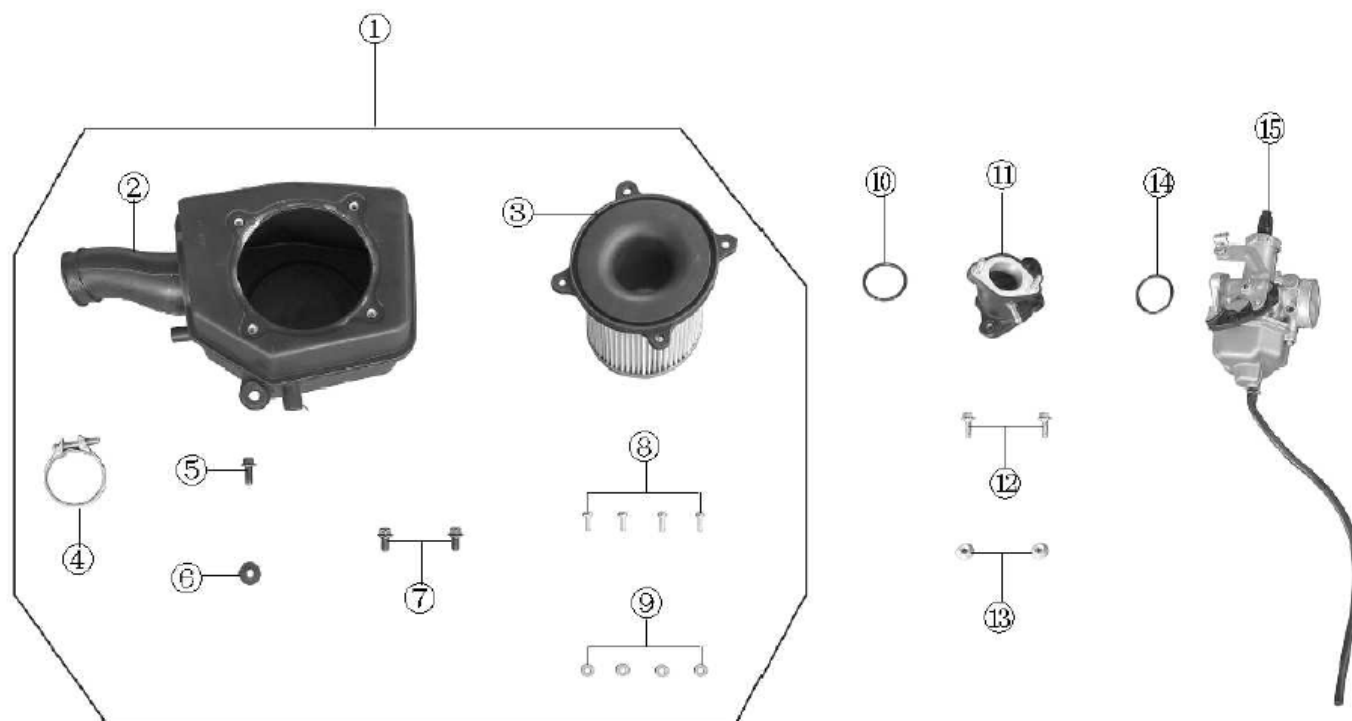
REF NO.	PARTS NO.	EN DESCRIPTION	VPC/komad	MPC/komad
P22-1	51103-I552-0100	FR TIRE 2.75-18	227,36 kn	277,38 kn
P22-2	51120-I552-000089	FR WHEEL,ALUMINIUM	852,24 kn	1.039,73 kn
P22-3	51104-I552-0000	FR WHEEL TUBE	95,85 kn	116,94 kn
P22-4	92102-000006302RS	BEARING 6302RS	70,56 kn	86,08 kn
P22-5	51106-I552-0000	SPACER,FR WHEEL AXLE	34,56 kn	42,16 kn
P22-6	51108-I552-0000	SUPPORT RING, FR WHEEL	32,76 kn	39,97 kn
P22-7	B061870214000060X	NUT M14×1.5	21,42 kn	26,13 kn
P22-8	51102-I552-0000	SPACER	30,72 kn	37,48 kn
P22-9	51116-0000-0700	OIL SEAL 22×42×7,WHEEL HUB	18,90 kn	23,06 kn
P22-10	87330-I552-0000	COUNTER	78,75 kn	96,08 kn
P22-11	51181-I552-0000	FR WHEEL AXLE	65,52 kn	79,93 kn

Escapamento



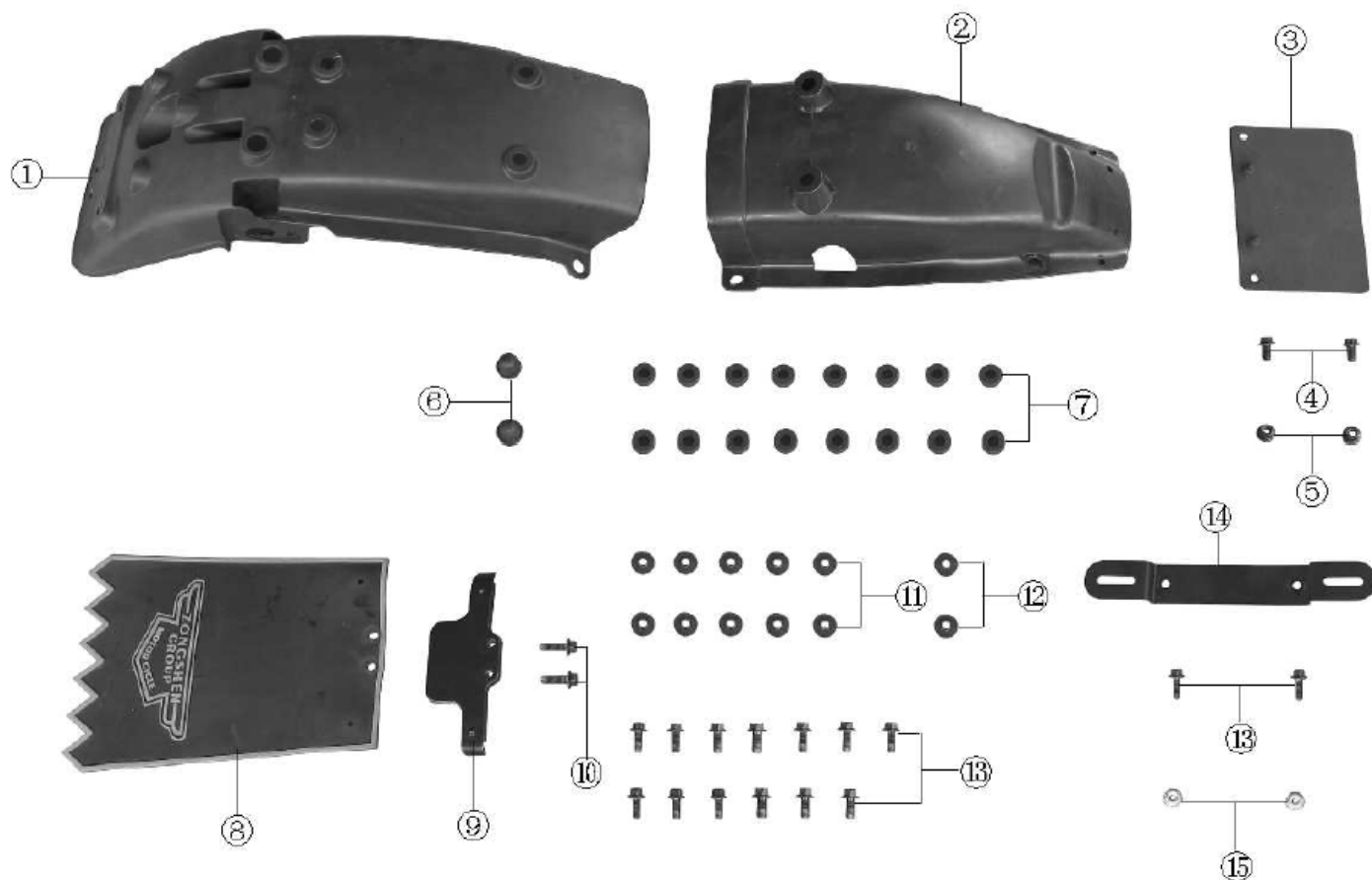
REF NO.	PARTS NO.	EN DESCRIPTION	VPC/komad	MPC/komad
P23-1	18000-I552-01000G	MUFFLER	515,16 kn	628,50 kn
P23-2	B0009600120000K0B	WASHER $\phi 12-29\phi-2$	5,04 kn	6,15 kn
P23-3	913039120202600X	WASHER $\phi 12 \times \phi 16 \times 8 - \phi 26 \times 2$	7,56 kn	9,22 kn
P23-4	18001-I552-0000	SLEEVE WASHER	8,82 kn	10,76 kn
P23-5	91202-1060-01760G	NUT M6	21,42 kn	26,13 kn

Filtro de ar e carburador



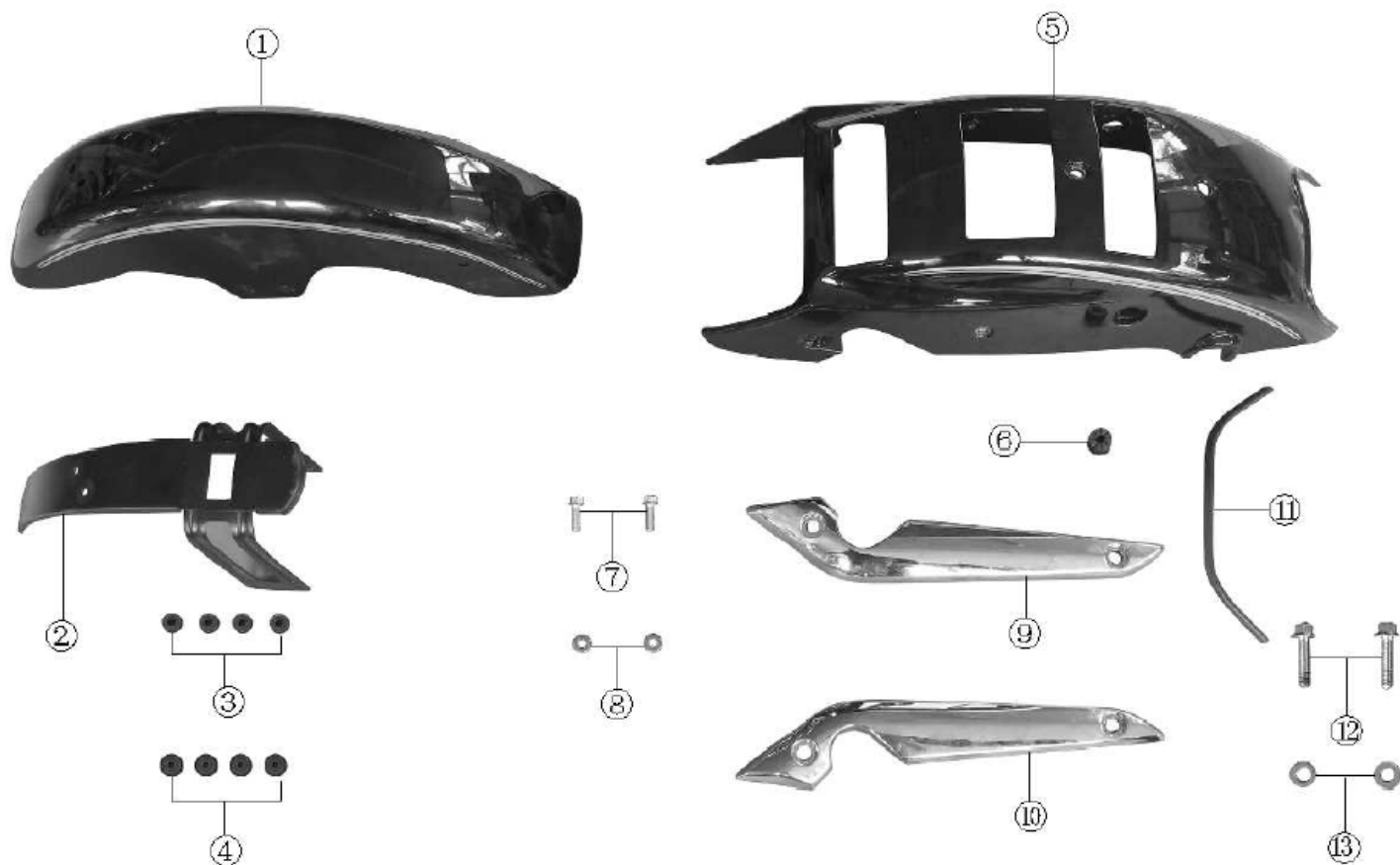
REF NO.	PARTS NO.	EN DESCRIPTION	VPC/komad	MPC/komad
P24-1	14305-L067-0000	AIR CLEANER	154,07 kn	187,96 kn
P24-2	16116-I552-0000	AIR CLEANER SHELL	110,16 kn	134,40 kn
P24-3	16101-I552-0000	FLITER,AIR CLEANER	95,04 kn	115,95 kn
P24-4	16123-I552-0000	CLIP,AIR CLEANER	15,12 kn	18,45 kn
P24-5	B166740006001670H	BOLT M6×16	7,56 kn	9,22 kn
P24-6	91303-9060401800H	WASHERφ6×φ18×1-4	7,56 kn	9,22 kn
P24-7	B166740006001270H	BOLT M6×12	7,56 kn	9,22 kn
P24-8	9A113-1060-0125	SCREW M6×12	6,30 kn	7,69 kn
P24-9	B0009600060000K0G	WASHER 6	2,52 kn	3,07 kn
P24-10	90101-20335000300	O-RINGΦ33.5×3	25,20 kn	30,74 kn
P24-11	15800-I552-0000	INLET PIPE	95,04 kn	115,95 kn
P24-12	B166740006001670G	BOLT M6×16	8,82 kn	10,76 kn
P24-13	B061770106000060X	NUT M6	7,56 kn	9,22 kn
P24-14	90101-20295000300	O-RINGΦ29.5×3	18,90 kn	23,06 kn
P24-15	17100-I552-0100	CARBURETOR PZ26	320,23 kn	390,68 kn

Paralama traseiro



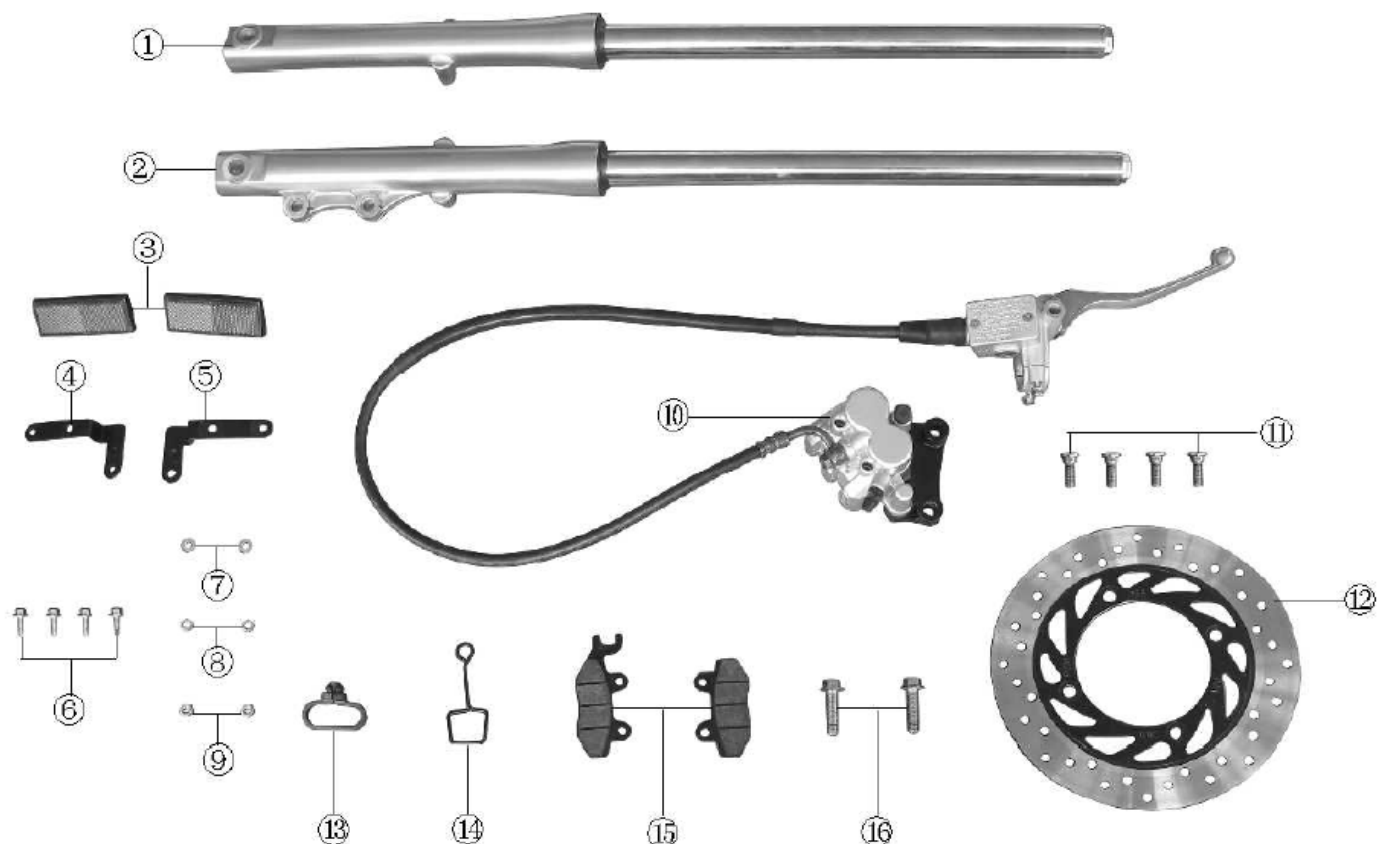
REF NO.	PARTS NO.	EN DESCRIPTION	VPC/komad	MPC/komad
P25-1	63201-I552-0000	FR SECTION,REAR FENDER	88,56 kn	108,04 kn
P25-2	63202-I552-0000	REAR SECTION,REAR FENDER	107,10 kn	130,66 kn
P25-3	33315-I552-0000	HULL RUBBER	87,12 kn	106,29 kn
P25-4	B16674000600127	BOLT M6×12	6,30 kn	7,69 kn
P25-5	B06187010600006	NUT M6	7,56 kn	9,22 kn
P25-6	63215-I552-0000	RUBBER PLUG,REAR FENDER	5,04 kn	6,15 kn
P25-7	63214-I552-0000	CUSHION,REAR FENDER	6,30 kn	7,69 kn
P25-8	63208-I552-0000	WATERPROOF RUBBER LAYER	103,68 kn	126,49 kn
P25-9	63227-I552-0000	SETTING BLOCK WATERPROOF RUBBER LAYER	29,76 kn	36,31 kn
P25-10	B166740006002070X	BOLT M6×20	7,56 kn	9,22 kn
P25-11	91303-9060401800H	WASHER φ6×φ18×1-4	7,56 kn	9,22 kn
P25-12	91301-90602018T0X	WASEHR φ6×φ18×2	5,04 kn	6,15 kn
P25-13	B166740006001670H	BOLT M6×16	7,56 kn	9,22 kn
P25-14	63206-I552-0000	BRACKET,REAR LICENCE	34,56 kn	42,16 kn
P25-15	B06187010600006	NUT M6	7,56 kn	9,22 kn

Paralama dianteiro



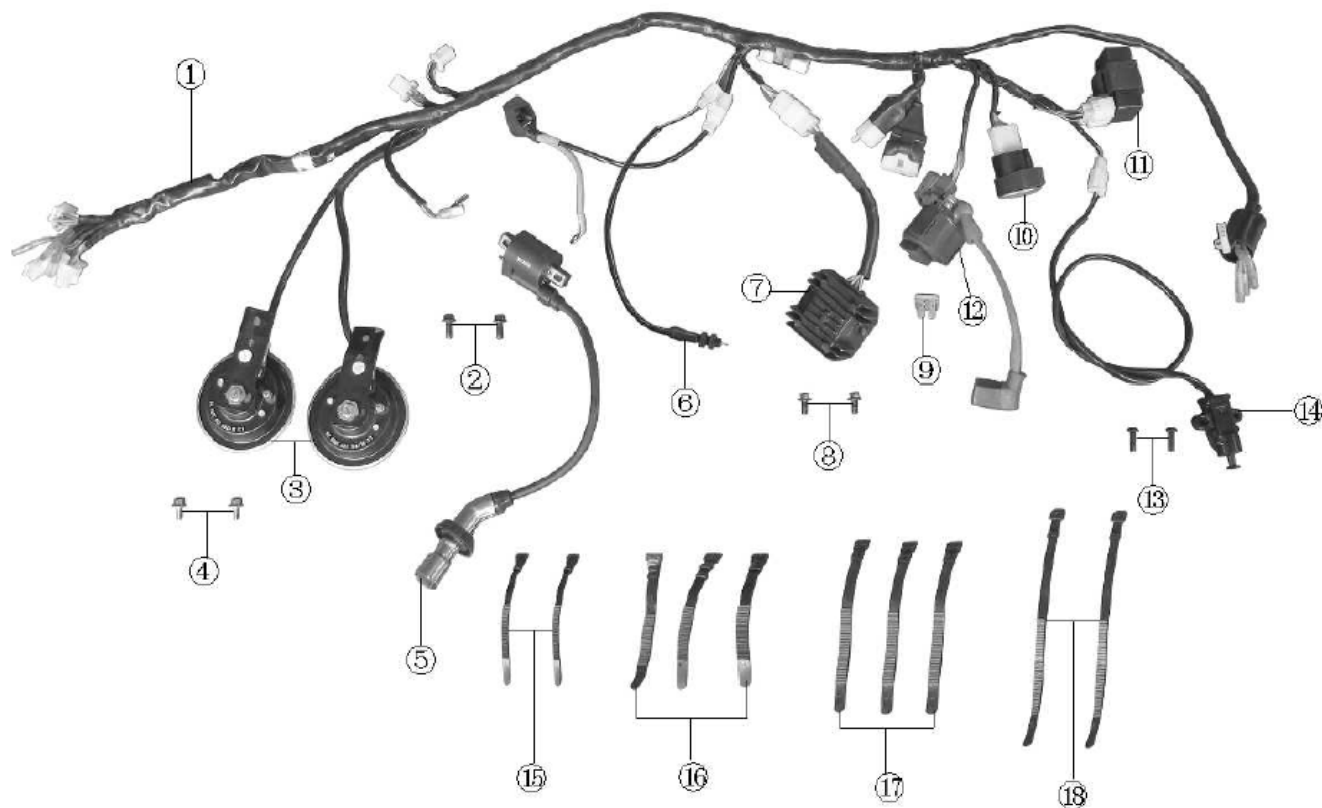
REF NO.	PARTS NO.	EN DESCRIPTION	VPC/komad	MPC/komad
P26-1	63104-I552-0000	FRONT FENDER	233,17 kn	284,47 kn
P26-2	63118-I552-000066	BRACKET,FRONT FENDER	95,85 kn	116,94 kn
P26-3	63109-I552-0000	RUBBER RING 6	46,08 kn	56,22 kn
P26-4	93111-I552-0000	RUBBER MAT FRONT FENDER	7,56 kn	9,22 kn
P26-5	63113-I552-0000	REAR FENDER	15,12 kn	18,45 kn
P26-6	B16674010500167	RUBBER PLUG,REAR FENDER	3,78 kn	4,61 kn
P26-7	B06177010500006	BOLT M6×20	7,56 kn	9,22 kn
P26-8	63203-I552-0000	WASHER Ø6	227,36 kn	277,38 kn
P26-9	63215-I552-0000	RIGHT REAR DECORATE	10,08 kn	12,30 kn
P26-10	B16674000600207	LEFT REAR DECORATE	7,56 kn	9,22 kn
P26-11	B0009600060000K	STRIP EMBED FRONT FENDER	1,26 kn	1,54 kn
P26-12	63775-I552-0000	BOLT M8×30	73,35 kn	89,49 kn
P26-13	63774-I552-0000	WASHER Ø8	73,35 kn	89,49 kn

Suspensão e freio dianteiro



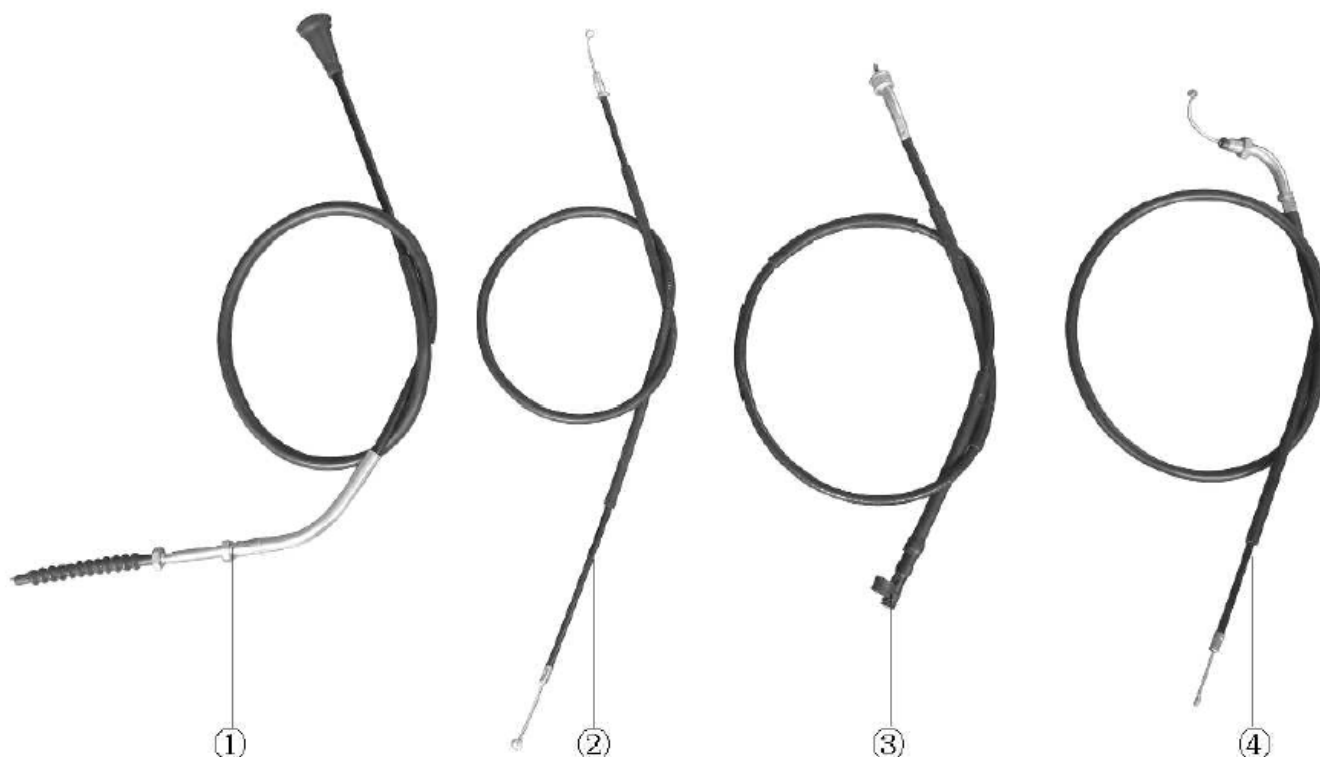
REF NO.	PARTS NO.	EN DESCRIPTION	VPC/komad	MPC/komad
P27-1	34200-I552-00000A	FRONT SHOCK ABSORBER RIGHT	495,44 kn	604,44 kn
P27-2	34100-I552-00000A	FRONT SHOCK ABSORBER LEFT	495,44 kn	604,44 kn
P27-3	85850-I552-0000	SIDE REFLECTOR	60,48 kn	73,79 kn
P27-4	85811-I552-0000	BRACKET,LEFT SIDE REFLECTOR	23,94 kn	29,21 kn
P27-5	85821-I552-0000	BRACKET,RIGHT SIDE REFLECTOR	23,94 kn	29,21 kn
P27-6	B166740006001670X	BOLT M6×16	7,56 kn	9,22 kn
P27-7	B0009600060000K0G	WASHER 6	6,30 kn	7,69 kn
P27-8	B913100906000000B	SPRING WASHER 6	6,30 kn	7,69 kn
P27-9	B06170006000006	NUT M6	7,56 kn	9,22 kn
P27-10	53000-I552-0100	ASSEMBLY,FRONT BRAKE	521,84 kn	636,64 kn
P27-11	9A120-1080-02050G	SCREW M8×20	7,56 kn	9,22 kn
P27-12	53001-I552-0000	FRONT BRAKE DISK	164,32 kn	200,47 kn
P27-13	63111-I552-0000	RING,GUARD WIRE	21,42 kn	26,13 kn
P27-14	53032-I552-0000	STRING NIP OIL PIPE,FRONT DISK BRAKE	21,42 kn	26,13 kn
P27-15	53013-I552-0000	FRICTION PLATE,FRONT BRAKE	85,95 kn	104,86 kn
P27-16	B166740010003570G	BOLT M10×1.25×35	28,98 kn	35,36 kn

Chicote Elétrico



REF NO.	PARTS NO.	EN DESCRIPTION	VPC/komad	MPC/komad
P28-1	85100-I552-0001	AIN HARNESS	660,49 kn	805,79 kn
P28-2	B16674000600167	BOLT M6×16	7,56 kn	9,22 kn
P28-3	85500-I552-0000	HORN	192,35 kn	234,66 kn
P28-4	B16674000600127	BOLT M6×12	6,30 kn	7,69 kn
P28-5	81100-I552-0100	IGNITION COIL	101,52 kn	123,85 kn
P28-6	84600-I552-0000	SWITCH,REAR BRAKE LIGHT	35,28 kn	43,04 kn
P28-7	83100-I552-0000	RECTIFIER	199,00 kn	242,78 kn
P28-8	B16674000600127	BOLT M6×12	6,30 kn	7,69 kn
P28-9	85171-I552-0000	FUSE	8,82 kn	10,76 kn
P28-10	85600-I552-0000	FLASHER	76,95 kn	93,88 kn
P28-11	81200-I552-0000	IGNITION	105,12 kn	128,25 kn
P28-12	82290-I552-0000	STARTER RELAY	83,25 kn	101,57 kn
P28-13	B16674000500167	BOLT M5×16	3,78 kn	4,61 kn
P28-14	32280-I552-0100	SWITCH,SIDE STAND	127,87 kn	156,00 kn
P28-15	08216-000-0700	BAND L=130mm	1,26 kn	1,54 kn
P28-16	08216-000-0000	BAND L=130mm	1,26 kn	1,54 kn
P28-17	08216-000-0100	BAND L=150mm	2,52 kn	3,07 kn
P28-18	08216-000-0200	BAND L=220mm	2,52 kn	3,07 kn

Cabos de controle



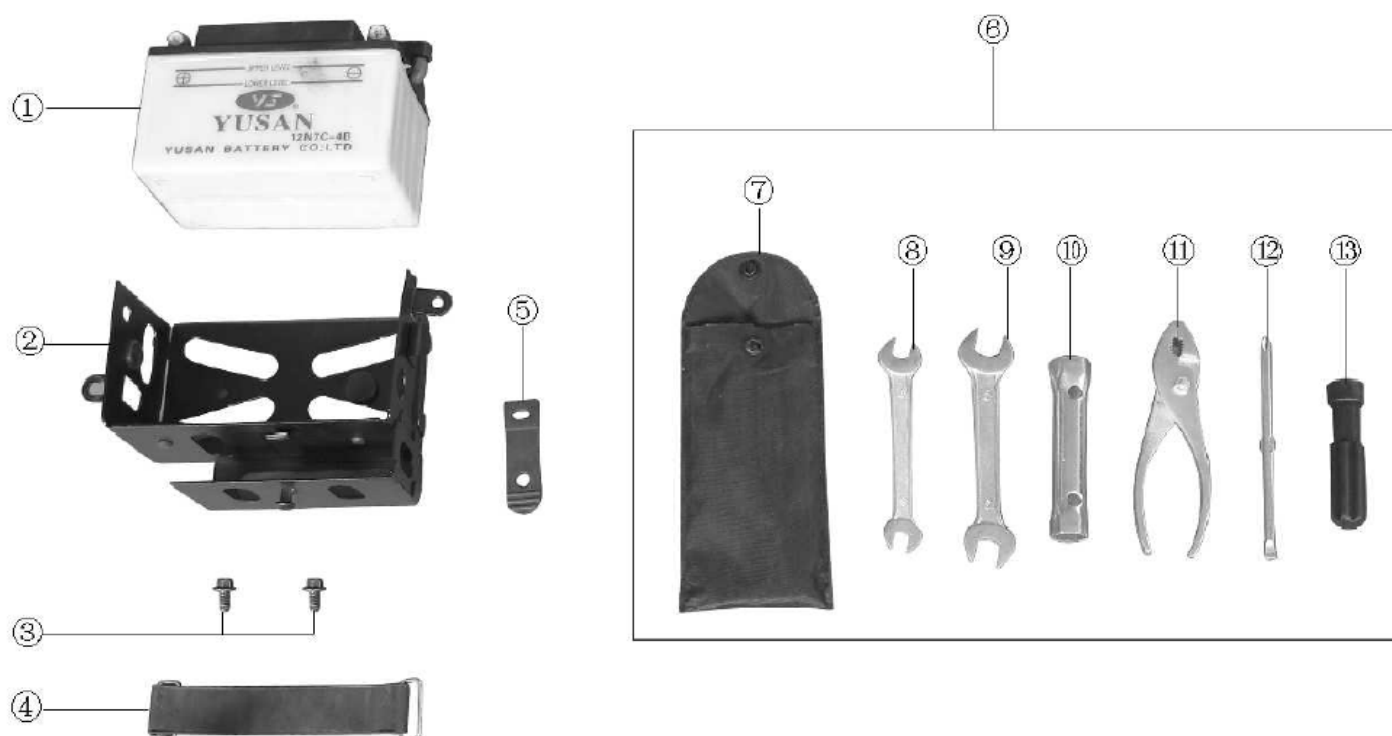
REF NO.	PARTS NO.	EN DESCRIPTION	VPC/komad	MPC/komad
P29-1	72600-I552-0000	CLUTCH CABLE	96,48 kn	117,71 kn
P29-2	72700-I552-0001	CHOKE CABLE	56,64 kn	69,10 kn
P29-3	87300-I552-0002	SOFT SHAFT, ODOMETER	80,64 kn	98,38 kn
P29-4	72400-I552-0003	THROTTLE CABLE	62,16 kn	75,84 kn
P30-1	51203-I552-0100	OUTER TIRE RR. WHEEL 3.50-16	344,08 kn	419,77 kn
P30-2	51204-I552-0000	REAR TUBE	82,35 kn	100,47 kn
P30-3	51220-I552-000089	RR. ALUMINUM WHEEL	852,24 kn	1.039,73 kn
P30-4	92102-000006302RS	BEARING 6302RS	70,56 kn	86,08 kn
P30-5	51116-0000-0400	OIL SEAL 28×42×7	18,90 kn	23,06 kn
P30-6	51007-I552-0400	BALANCING WEIGHT BLOCK 25g	26,46 kn	32,28 kn
P30-7	B061870214000060X	NUT M14×1.5	21,42 kn	26,13 kn
P30-8	35010-I552-0000	CHAIN ADJUSTOR	70,56 kn	86,08 kn
P30-9	51225-I552-0000	RIGHT BUSH, REAR WHEEL	34,56 kn	42,16 kn
P30-10	51225-I552-0000	INNER BUSH, REAR WHEEL HUB	41,28 kn	50,36 kn
P30-11	35030-I552-0000	PRESSURE PLATE, REAR SHAFT	28,98 kn	35,36 kn
P30-12	51281-I552-0000	REAR AXLE M14×310	76,32 kn	93,11 kn
P30-13	51207-I552-0000	Collar, Rear Wheel Axle	41,28 kn	50,36 kn

Roda Traseira



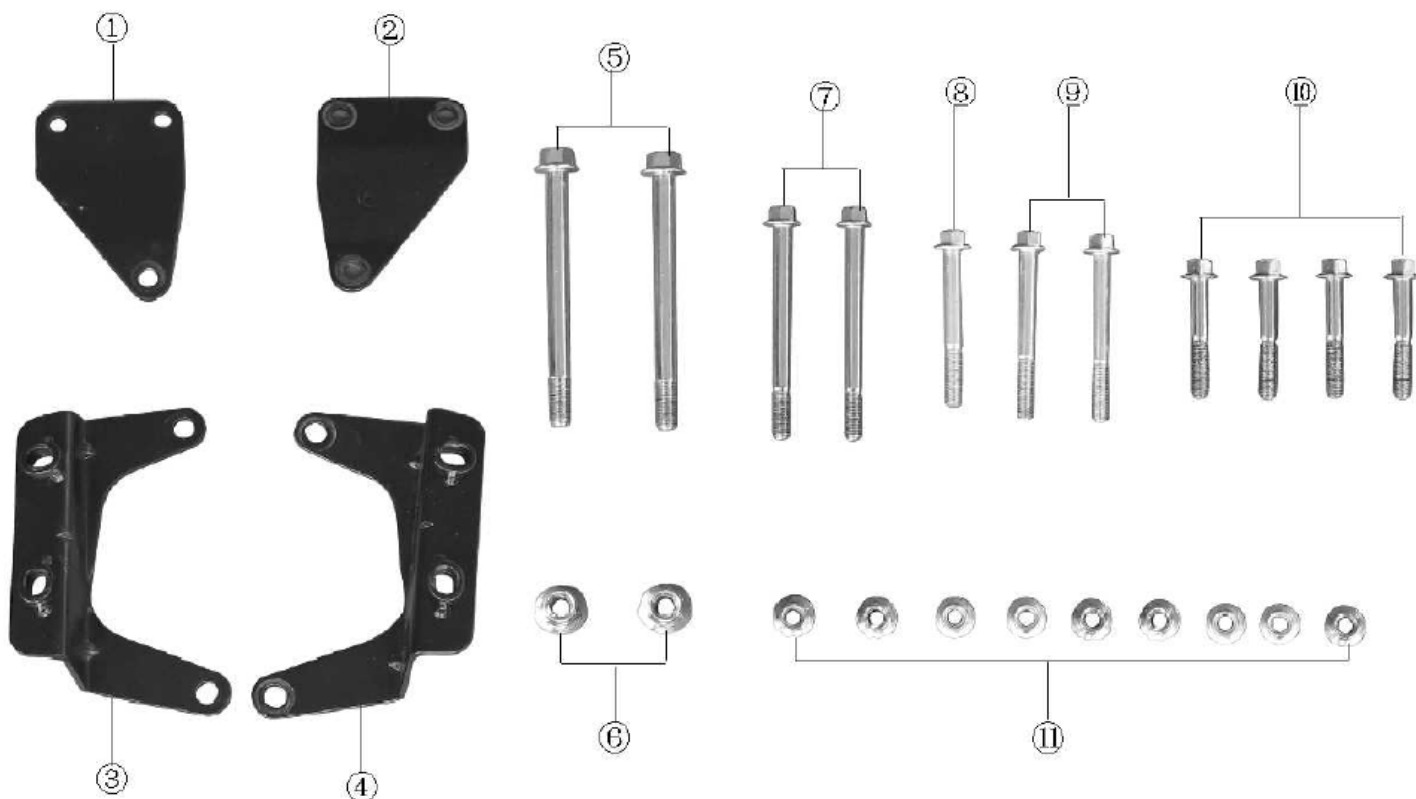
REF NO.	PARTS NO.	EN DESCRIPTION	VPC/komad	MPC/komad
P30-1	51203-I552-0100	OUTER TIRE RR. WHEEL 3.50-16	344,08 kn	419,77 kn
P30-2	51204-I552-0000	REAR TUBE	82,35 kn	100,47 kn
P30-3	51220-I552-000089	RR. ALUMINUM WHEEL	852,24 kn	1.039,73 kn
P30-4	92102-000006302RS	BEARING 6302RS	70,56 kn	86,08 kn
P30-5	51116-0000-0400	OIL SEAL 28x42x7	18,90 kn	23,06 kn
P30-6	51007-I552-0400	BALANCING WEIGHT BLOCK 25g	26,46 kn	32,28 kn
P30-7	B061870214000060X	NUT M14x1.5	21,42 kn	26,13 kn
P30-8	35010-I552-0000	CHAIN ADJUSTOR	70,56 kn	86,08 kn
P30-9	51225-I552-0000	RIGHT BUSH,REAR WHEEL	34,56 kn	42,16 kn
P30-10	51225-I552-0000	INNER BUSH,REAR WHEEL HUB	41,28 kn	50,36 kn
P30-11	35030-I552-0000	PRESSURE PLATE,REAR SHAFT	28,98 kn	35,36 kn
P30-12	51281-I552-0000	REAR AXLE M14x310	76,32 kn	93,11 kn
P30-13	51207-I552-0000	Collar,Rear Wheel Axle	41,28 kn	50,36 kn

Bateria



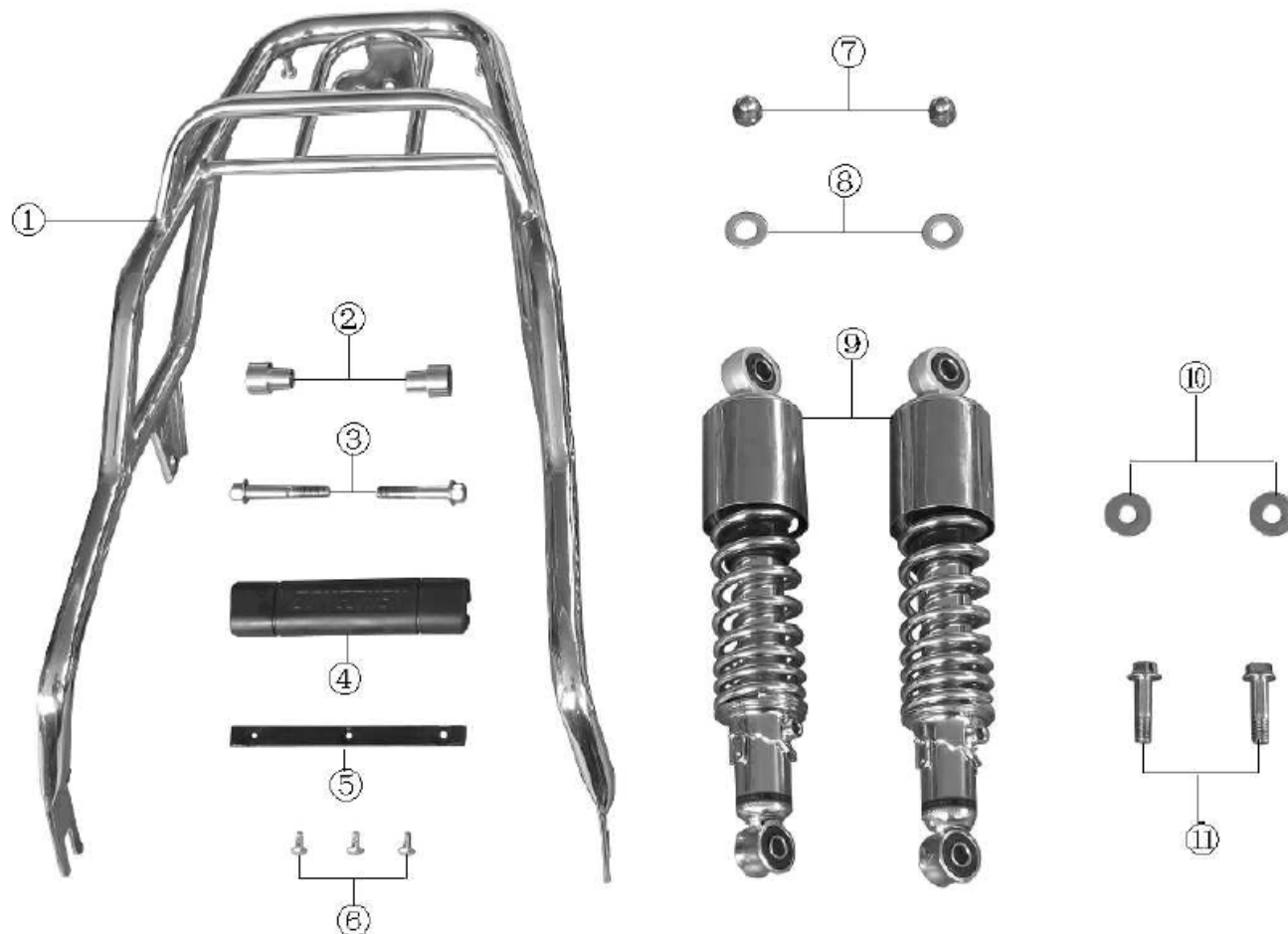
REF NO.	PARTS NO.	EN DESCRIPTION	VPC/komad	MPC/komad
P31-1	83200-I552-0000	BATTERY 12V7Ah	518,66 kn	632,76 kn
P31-2	83220-I552-0000	BRACKET,BATTERY	100,35 kn	122,43 kn
P31-3	B16674010600127	BOLT M6×12	6,30 kn	7,69 kn
P31-4	83210-I552-0000	BAND,BATTERY	32,76 kn	39,97 kn
P31-5	31250-I552-0000	TOOL BOX BAND	12,60 kn	15,37 kn
P31-6	06000-I552-0000	DRIVER TOOLS	90,90 kn	110,90 kn
P31-7	06202-I552-0000	TOOL BAG	11,34 kn	13,83 kn
P31-8	06006-0000-0810	SPANNER 8×10	32,76 kn	39,97 kn
P31-9	06006-0000-1315	SPANNER 13×15	29,76 kn	36,31 kn
P31-10	06003-I552-0000	SPARK PLUG SOCKET	34,56 kn	42,16 kn
P31-11	06009-0000-0000	PLIERS	50,40 kn	61,49 kn
P31-12	06005-I552-0000	DUBLE HEAD SREW DRIVER	34,02 kn	41,50 kn
P31-13	06010-I552-0000	SCREW DRIVER GRIP	15,12 kn	18,45 kn

Suspensão Dianteira



REF NO.	PARTS NO.	EN DESCRIPTION	VPC/komad	MPC/komad
P32-1	32301-I552-0000	UPPER CONNECT PLATE LEFT ENGIN	36,54 kn	44,58 kn
P32-2	32302-I552-0000	UPPER CONNECT PLATERIGHT ENGIN	36,54 kn	44,58 kn
P32-3	32327-I552-0000	LEFT FRONT SUSPENSION	57,12 kn	69,69 kn
P32-4	32328-I552-0000	RIGHT FRONT SUSPENSION	57,12 kn	69,69 kn
P32-5	B16674001001107	BOLT M10×110	36,54 kn	44,58 kn
P32-6	B06187021000006	NUT M10	21,42 kn	26,13 kn
P32-7	B16674000800907	BOLT M8×90	17,64 kn	21,52 kn
P32-8	B16674000800657	BOLT M8×65	11,34 kn	13,83 kn
P32-9	B16674000800707	BOLT M8×70	12,60 kn	15,37 kn
P32-10	B16674000800507	BOLT M8×50	10,08 kn	12,30 kn
P32-11	B06187020800006	NUT M8	6,30 kn	7,69 kn

Suspensão traseira e bagageiro



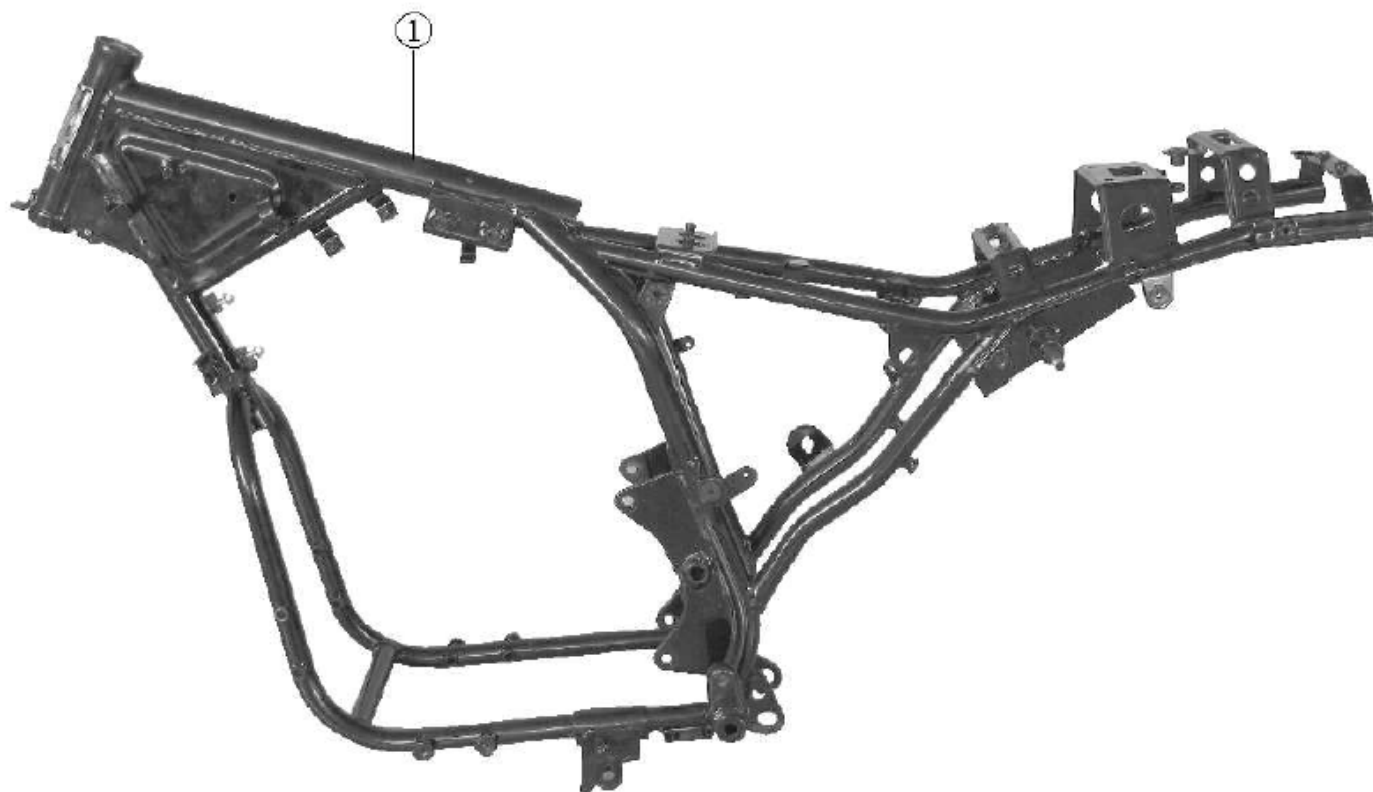
REF NO.	PARTS NO.	EN DESCRIPTION	VPC/komad	MPC/komad
P33-1	42120-I552-0000	REAR CARRIER	249,70 kn	304,63 kn
P33-2	42125-I552-0000	REAR BUSH REAR CARRIER	36,54 kn	44,58 kn
P33-3	B16674000800457	BOLT M8×45	7,56 kn	9,22 kn
P33-4	42107-I552-0000	RUBBER REAR CARRIER	34,56 kn	42,16 kn
P33-5	42137-I552-0000	BRACKET CONNECT REAR CARRIER	34,56 kn	42,16 kn
P33-6	9A133-1042-012X0X	SCREW ST4.2×12	6,30 kn	7,69 kn
P33-7	B009230010000060G	NUT M10	21,42 kn	26,13 kn
P33-8	B0009701120000K0X	WASHER Φ12	5,04 kn	6,15 kn
P33-9	33300-I552-0000	REAR SHOCK ABSORBER	384,14 kn	468,66 kn
P33-10	B0009600100000K0G	WASHER Φ10	5,04 kn	6,15 kn
P33-11	B166740010003870G	BOLT M10×1.25×38	28,98 kn	35,36 kn
P34-1	41200-I552-0000	SEAT	191,56 kn	233,70 kn

Assento e Tampas laterais



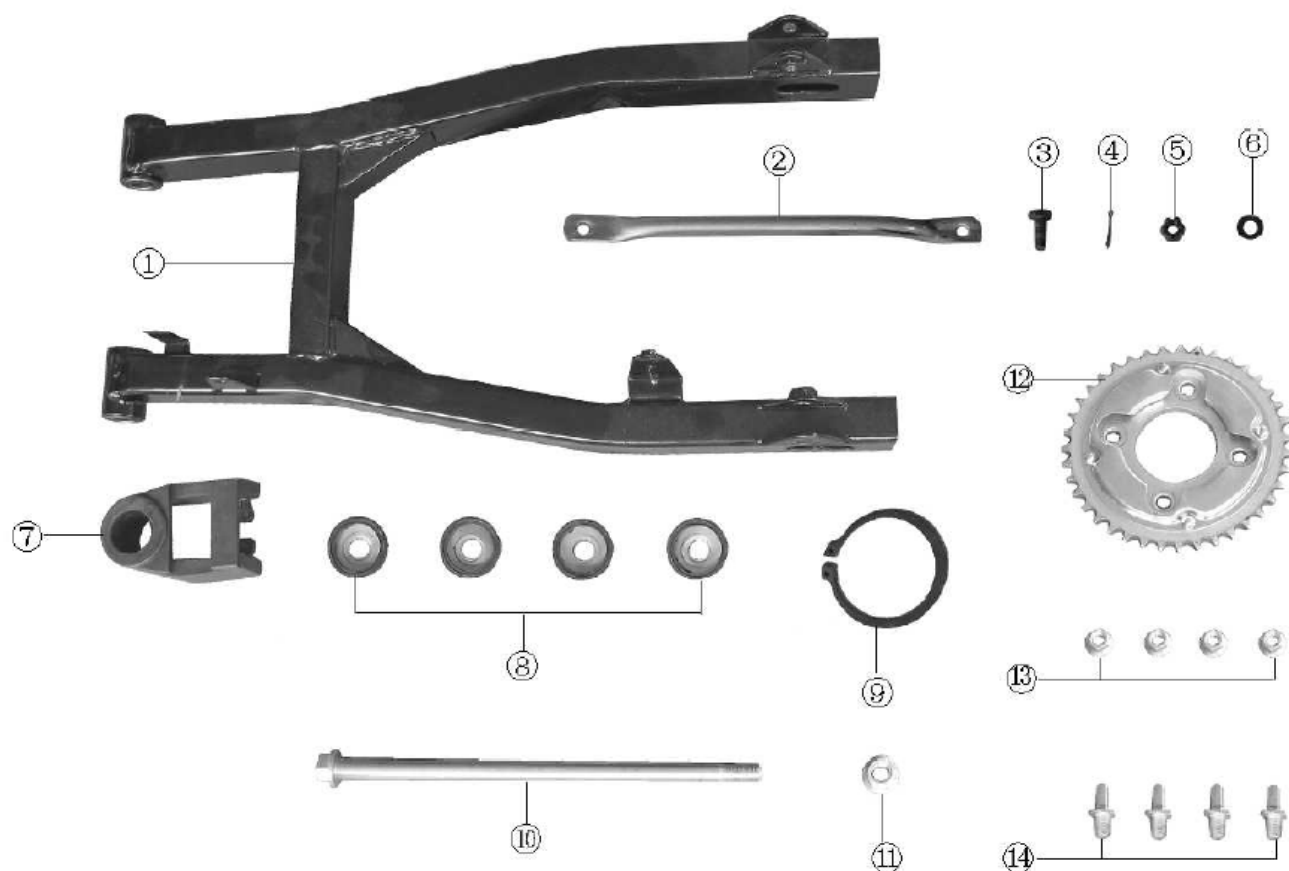
REF NO.	PARTS NO.	EN DESCRIPTION	VPC/komad	MPC/komad
P34-1	41200-I552-0000	SEAT	191,56 kn	233,70 kn
P34-2	41300-I552-0000	REAR SEAT	198,90 kn	242,66 kn
P34-3	63301-I552-0000	LEFT SIDE COVER, FTAME	197,50 kn	240,95 kn
P34-4	63332-I552-0000	RIGHT SIDE COVER, FTAME	197,50 kn	240,95 kn
P34-5	6333C-I552-0000	RUBBER RING	3,78 kn	4,61 kn
P34-6	9A114-1060-02050G	SCREW M6×20	6,30 kn	7,69 kn
P34-7	9A114-1060-01250G	SCREW M6×12	6,30 kn	7,69 kn
P34-8	9A114-1060-02550G	BOLT M6×25	6,30 kn	7,69 kn
P34-9	63320-I552-0000	LOCK, SIDE COVER	46,08 kn	56,22 kn

Chassis



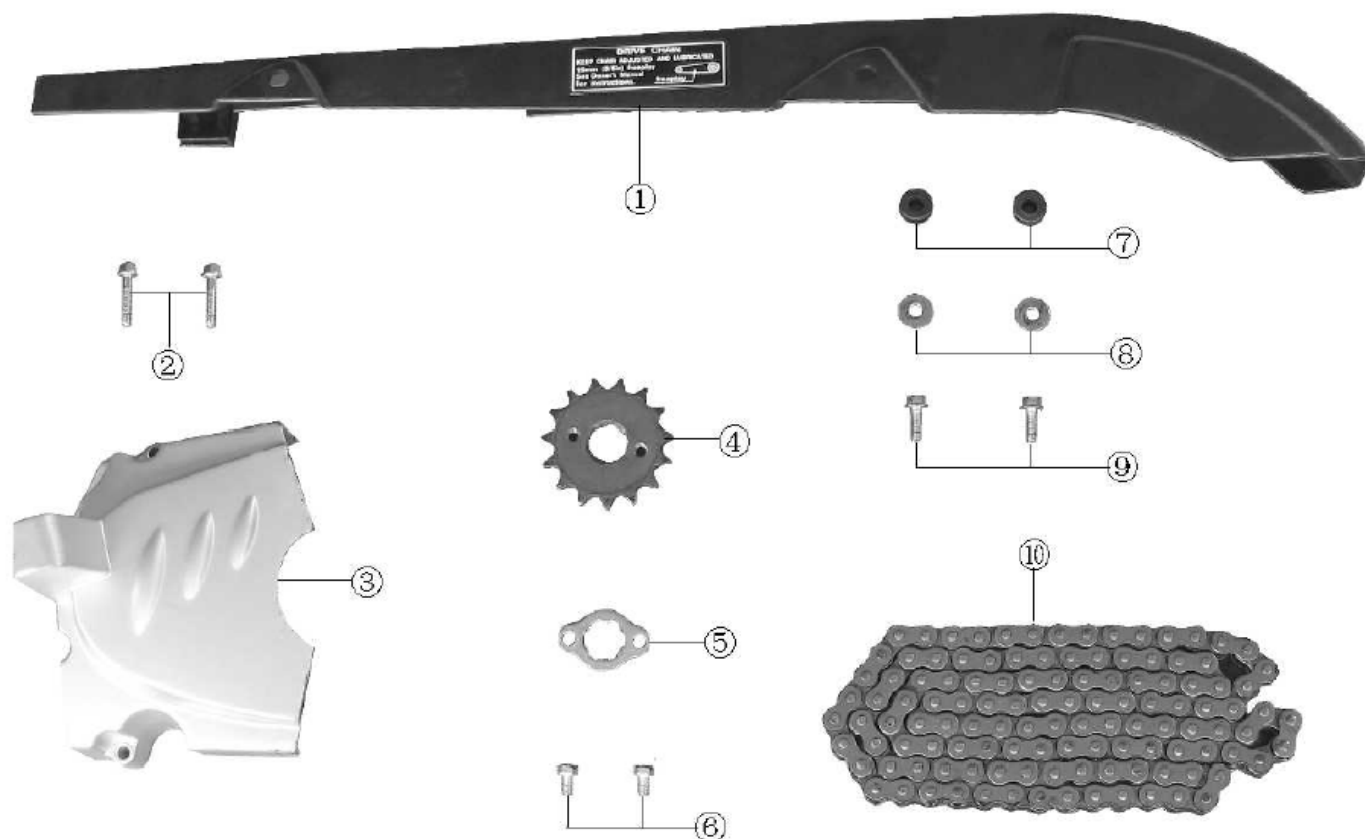
REF NO.	PARTS NO.	EN DESCRIPTION	VPC/komad	MPC/komad
P35-1	31100-I552-010065	FRAME	721,14 kn	879,79 kn

Balança traseira



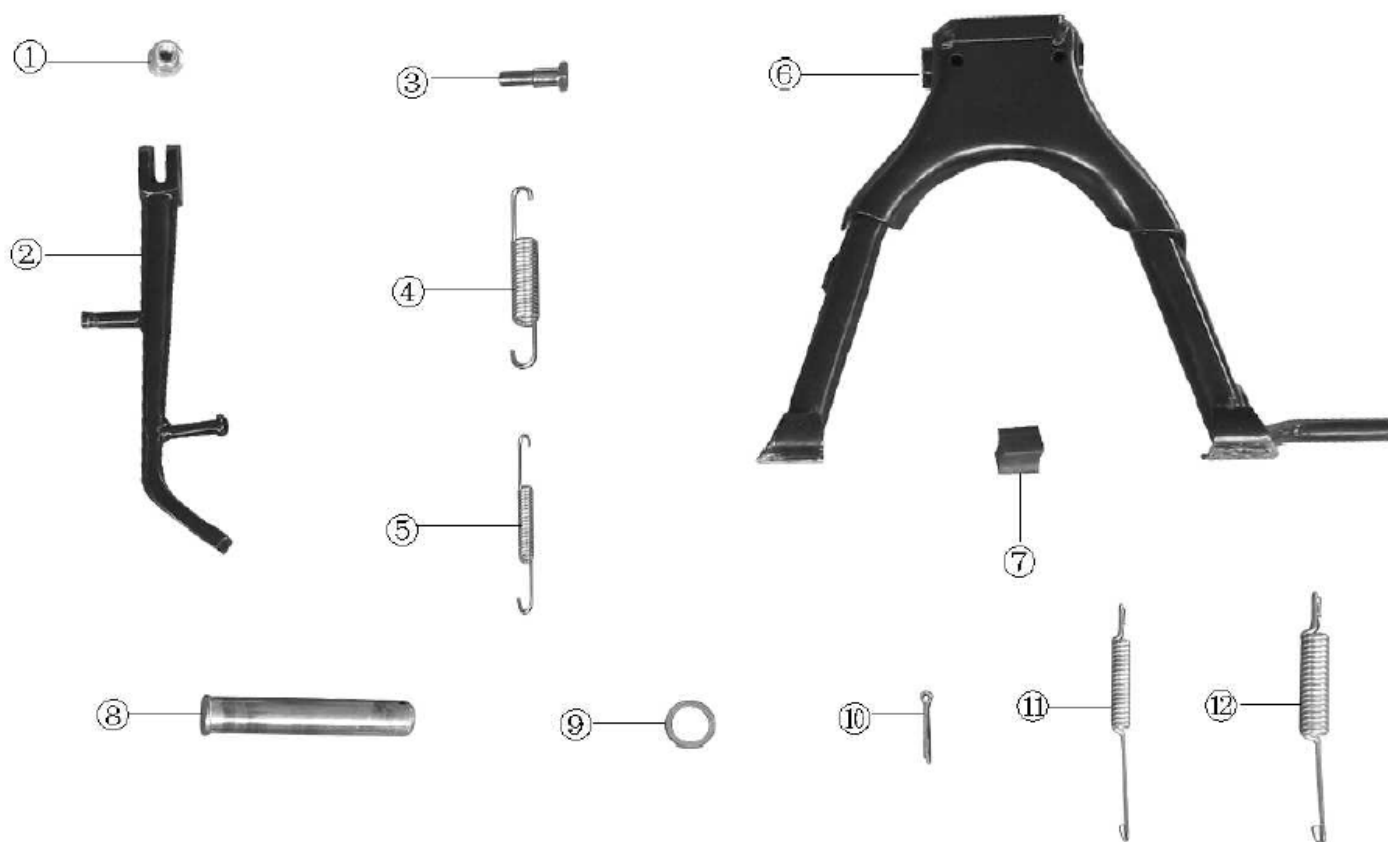
REF NO.	PARTS NO.	EN DESCRIPTION	VPC/komad	MPC/komad
P36-1	35220-I552-0000	REAR SWING ARM	322,13 kn	393,00 kn
P36-2	35213-I552-0000	POSITION LIMIT PIPE,SWING ARM	60,48 kn	73,79 kn
P36-3	35217-I552-0000	BOLT,SWING ARM POSITION LIMIT PIPE	11,34 kn	13,83 kn
P36-4	35219-I552-0000	PIN,SWING ARM POSITION LIMIT PIPE	2,52 kn	3,07 kn
P36-5	B06180001000006	NTU M10	15,12 kn	18,45 kn
P36-6	35216-I552-0000	WASHER ϕ 10	5,04 kn	6,15 kn
P36-7	35001-I552-0000	CHAIN PROTECTOR	80,64 kn	98,38 kn
P36-8	35201-I552-0000	PROVENT DUST,REAR SWING ARM	28,98 kn	35,36 kn
P36-9	11242-I552-0000	STOP WASHER	50,40 kn	61,49 kn
P36-10	35281-I552-00010X	SWING ARM AXLE	72,72 kn	88,72 kn
P36-11	B061870214000060X	NUT M14 \times 1.5	21,42 kn	26,13 kn
P36-12	55002-I552-0000	SPROCKET	150,07 kn	183,09 kn
P36-13	B061870210000060X	NUT M10 \times 1.25	21,42 kn	26,13 kn
P36-14	91118-6100-03770C	STUD M10 \times 1.25 \times 37	30,24 kn	36,89 kn

Transmissão secundária



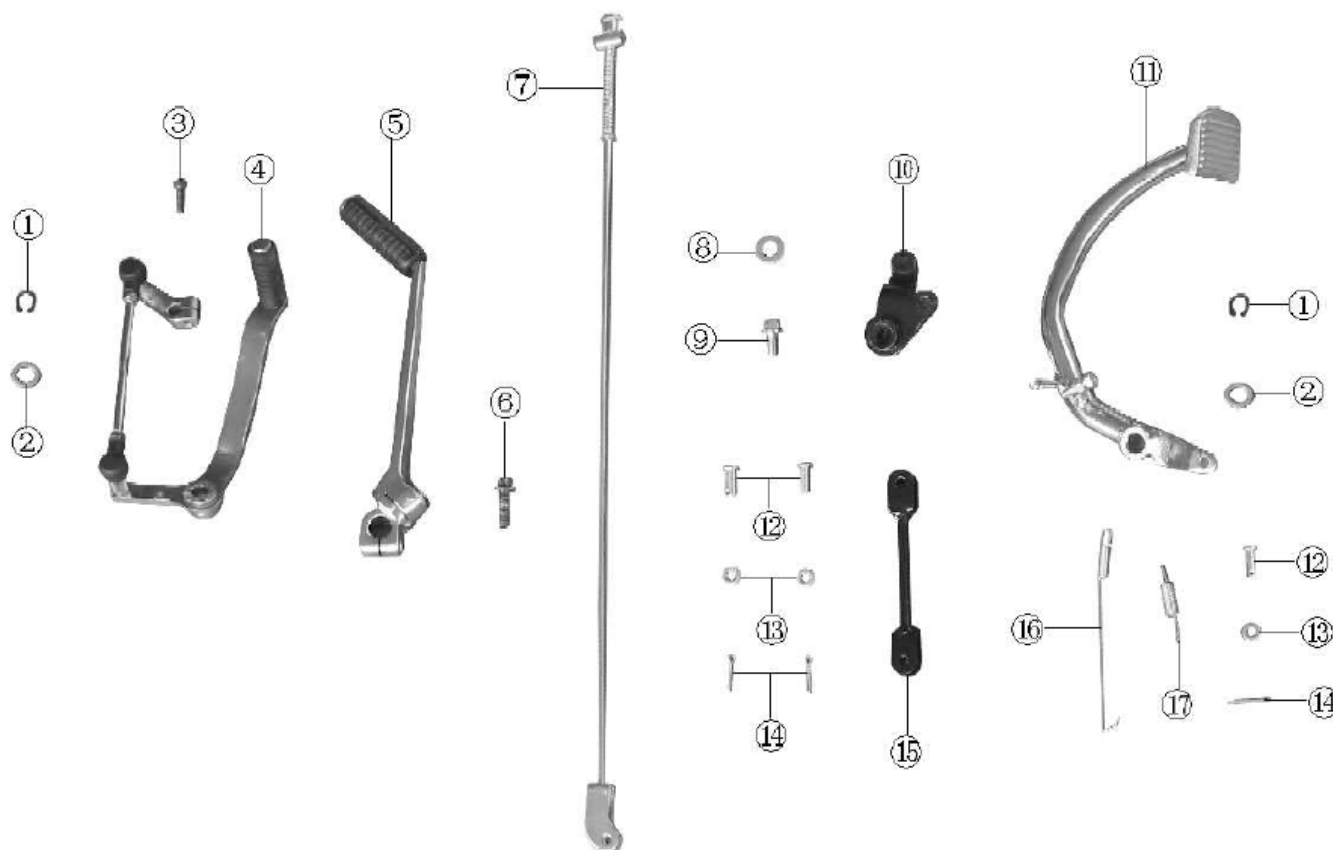
REF NO.	PARTS NO.	EN DESCRIPTION	VPC/komad	MPC/komad
P37-1	35110-I552-000066	CHAIN BOX	67,20 kn	81,98 kn
P37-2	B166740A0600257	SCREW M6x25	6,30 kn	7,69 kn
P37-3	12302-I008-27008S	L RR ENGINE SIDE COVER	150,07 kn	183,09 kn
P37-4	23401-I552-0000	OUTPUT SPROCKET	62,16 kn	75,84 kn
P37-5	23402-I552-0000	FIRM PLATE OUTPUT SPROCKET	3,78 kn	4,61 kn
P37-6	B05783000600107	BOLT M6x10	3,78 kn	4,61 kn
P37-7	63312-M567-0000	DAMPING RUBBER	15,12 kn	18,45 kn
P37-8	91303-9060401800G	WASHER $\phi 6 \times \phi 18 \times 1-4$	7,56 kn	9,22 kn
P37-9	B166740006001670G	SCREW M6x16	8,82 kn	10,76 kn
P37-10	26400-428H-0120	CHAIN (428Hx120)	137,64 kn	167,92 kn

Cavelele central e lateral



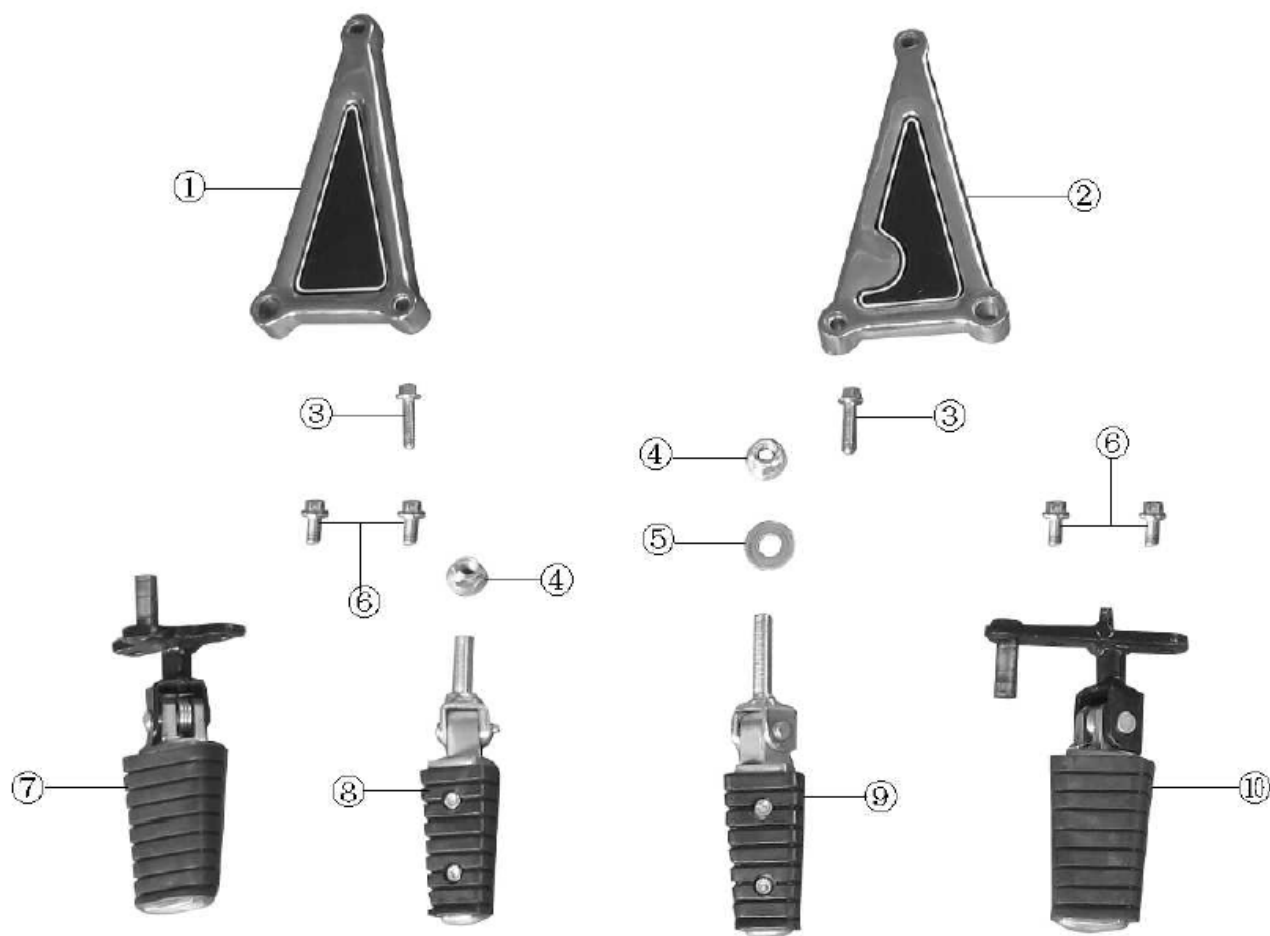
REF NO.	PARTS NO.	EN DESCRIPTION	VPC/komad	MPC/komad
P38-1	B061870210000060X	NUT M10×1.25	21,42 kn	26,13 kn
P38-2	32130-I552-0000	SIDE STAND	138,53 kn	169,00 kn
P38-3	91113-6100-03570X	BOLT M10×1.25×35	28,98 kn	35,36 kn
P38-4	32102-I552-0000	OUTER SPRING,SIDE STAND	15,12 kn	18,45 kn
P38-5	32200-I552-0000	INNER SPRING,SIDE STAND	154,07 kn	187,96 kn
P38-6	32204-I552-0000	MAIN STAND	7,56 kn	9,22 kn
P38-7	32281-I552-0000	RUBBER PAD,MAIN STAND	56,64 kn	69,10 kn
P38-8	91301-91902025T0X	SHAFT,MAIN STAD	5,04 kn	6,15 kn
P38-9	B000910003002500X	WASHER φ19×φ25×2	1,26 kn	1,54 kn
P38-10	32202-I552-0000	SPLIT PINφ3×25	23,94 kn	29,21 kn

Pedais



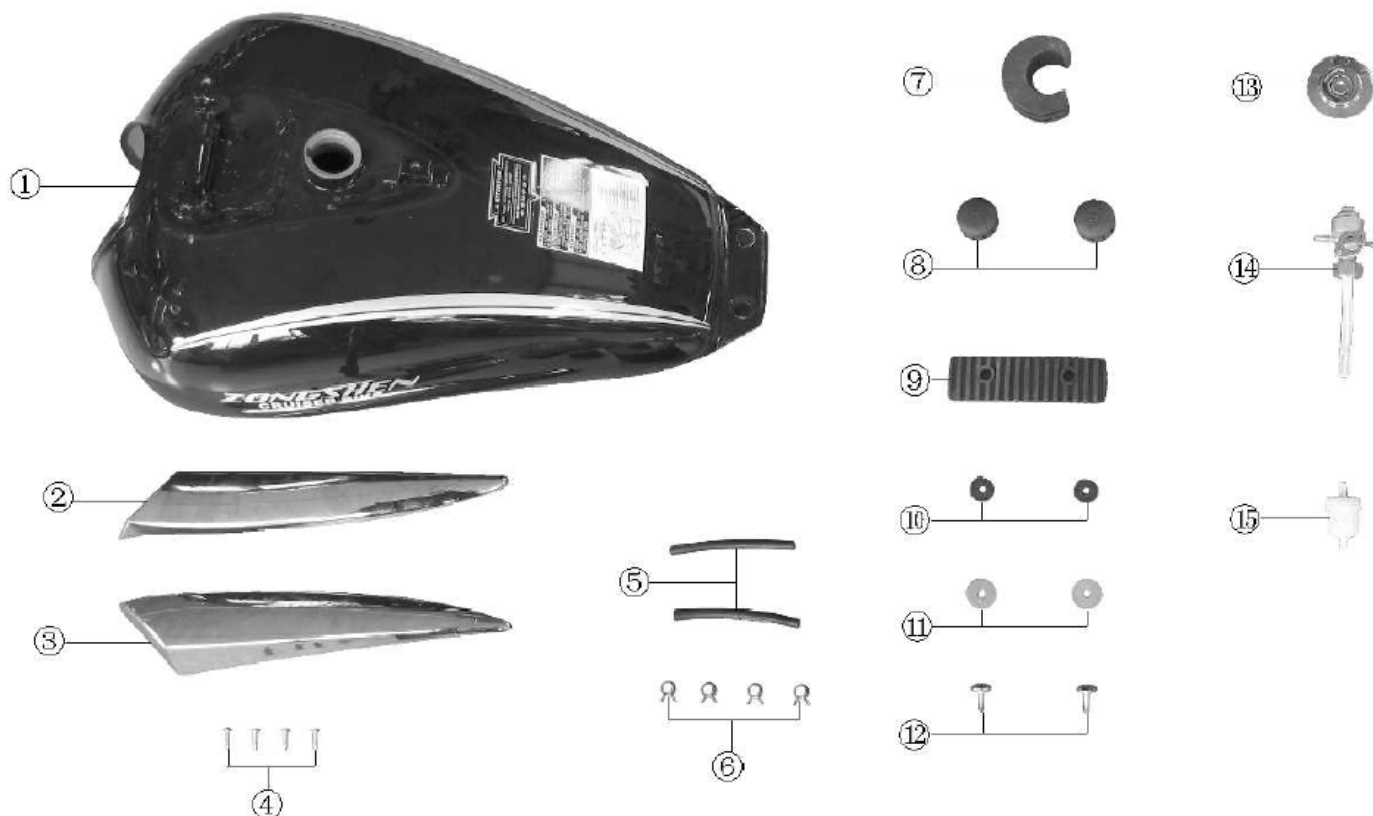
REF NO.	PARTS NO.	EN DESCRIPTION	VPC/komad	MPC/komad
P39-1	B008940112000000E	CIRCLIP 12	6,30 kn	7,69 kn
P39-2	B0009703120000L0B	WASHER 12	8,82 kn	10,76 kn
P39-3	B05783000600257	BOLT M6x25	6,30 kn	7,69 kn
P39-4	24400-I552-0000	PEDAL,GEAR SHIFT	136,31 kn	166,30 kn
P39-5	21200-I552-0000	STARTING ARM	107,55 kn	131,21 kn
P39-6	B166740008001670G	BOLT M8x16	5,04 kn	6,15 kn
P39-7	52200-I552-0000	REAR BRAKE PULL ROD	60,48 kn	73,79 kn
P39-8	B0009703080000L0B	WASHER8	5,04 kn	6,15 kn
P39-9	B0578300080016	BOLT M8x16	5,04 kn	6,15 kn
P39-10	52140-I552-000065	CONECTLEVEL REAR BRAKE PULL ROD	77,76 kn	94,87 kn
P39-11	52100-I552-0000	REAR BRAKE LEVER	133,20 kn	162,50 kn
P39-12	B0088200060018T0X	SCREW 6x18	6,30 kn	7,69 kn
P39-13	B0009703060000L0B	WASHER 6	5,04 kn	6,15 kn
P39-14	B000910002001870X	PIN2x18	0,00 kn	0,00 kn
P39-15	52110-I552-000065	CONNECT ROD,REAR BRAKE LEVER	50,40 kn	61,49 kn
P39-16	84602-I552-0000	SPRING,REAR BRAKE LIGHT	6,30 kn	7,69 kn
P39-17	52201-I552-0000	RETURNSPRING,REAR BRAKE PULL ROD	21,42 kn	26,13 kn

Pedaleiras



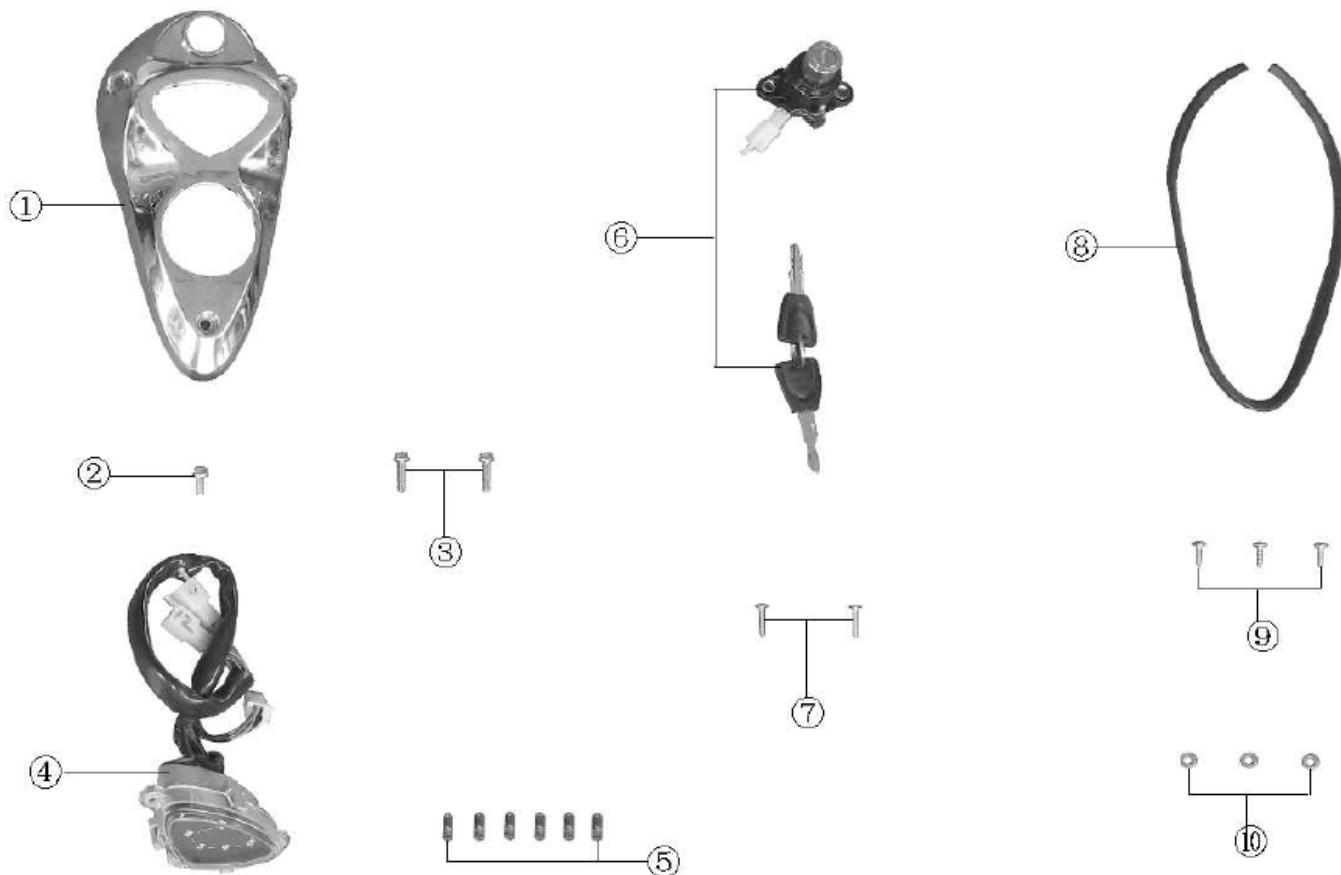
REF NO.	PARTS NO.	EN DESCRIPTION	VPC/komad	MPC/komad
P40-1	32415-I552-0000	BASKET,REAR FOOTREST,LEFT	117,22 kn	143,00 kn
P40-2	32425-I552-0000	BASKET,REAR FOOTREST RIGHT	117,22 kn	143,00 kn
P40-3	B166740008003070G	BOLT M8×30	6,30 kn	7,69 kn
P40-4	B06187021200030X	NUT M12×1.25	21,42 kn	26,13 kn
P40-5	B0009703120000L0B	WASHER 12	8,82 kn	10,76 kn
P40-6	B166740008001670G	BOLT M8×16	5,04 kn	6,15 kn
P40-7	32110-I552-000065	FRONT FOOTREST,LEFT	219,96 kn	268,35 kn
P40-8	32410-I552-00000X	REAR FOOTREST,LEFT	81,00 kn	98,82 kn
P40-9	32420-I552-00000X	REAR FOOTREST,RIGHT	81,00 kn	98,82 kn
P40-10	32120-I552-000065	RIGHT FOOTREST,FRONT	157,59 kn	192,26 kn

Tanque



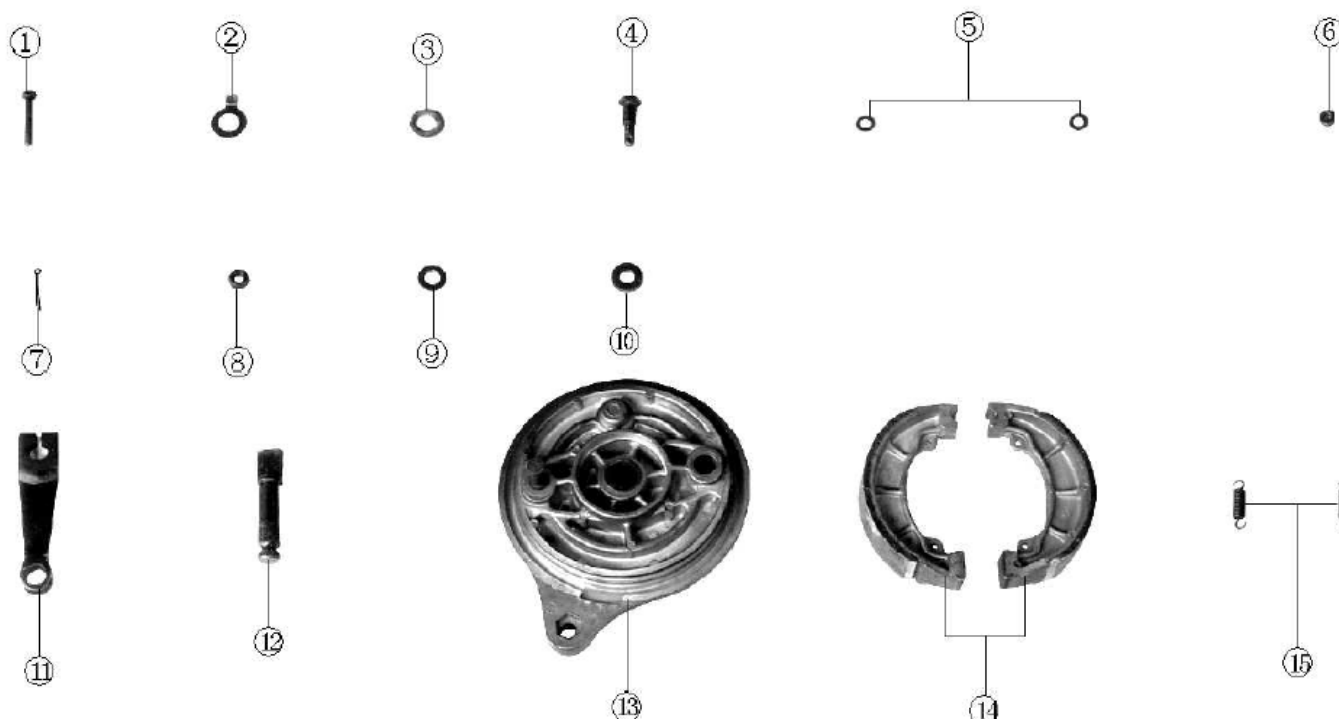
REF NO.	PARTS NO.	EN DESCRIPTION	VPC/komad	MPC/komad
P41-1	61100-I552-0000	FUEL TANK BODY	729,81 kn	890,37 kn
P41-2	61132-I552-0000	RIGHT LOWER DECORATE COVER FUEL TANK	94,32 kn	115,07 kn
P41-3	61131-I552-0000	LEFT LOWER DECORATE COVER FUEL TANK	94,32 kn	115,07 kn
P41-4	9A133-1042-015X0X	SCREW ST4.2×15	6,30 kn	7,69 kn
P41-5	61302-0000-6000	FUEL TUBE Φ4×Φ8×100	23,94 kn	29,21 kn
P41-6	61312-I552-0000	CIRCLIP,FUEL PIPE	18,90 kn	23,06 kn
P41-7	61127-I552-0000	RUBBER PAD,FUEL TANK	64,68 kn	78,91 kn
P41-8	61111-I552-0000	FRONT CUSHION RUBBER CAP,FUEL TANK	34,56 kn	42,16 kn
P41-9	61112-I552-0000	REAR CUSHION RUBBER CAP,FUEL TANK	53,76 kn	65,59 kn
P41-10	61121-I552-0000	RUBBER WASHER	7,56 kn	9,22 kn
P41-11	91301-90602025T0X	WASHER φ6×φ25×2	5,04 kn	6,15 kn
P41-12	9A114-1060-01650G	SCREW M6×16	6,30 kn	7,69 kn
P41-13	61140-I552-0000	FUEL TANK CAP	96,75 kn	118,04 kn
P41-14	61150-I126-0000	FUEL SUPPLY COCK	58,80 kn	71,74 kn
P41-15	61180-I552-0000	FILTER,FUEL	25,20 kn	30,74 kn

Ignição



REF NO.	PARTS NO.	EN DESCRIPTION	VPC/komad	MPC/komad
P42-1	61190-I552-0000	ECORATE COVER,FUEL TANK	99,00 kn	120,78 kn
P42-2	B166740106001270L	BOLT M6×12	6,30 kn	7,69 kn
P42-3	B166740106002070L	BOLT M6×20	7,56 kn	9,22 kn
P42-4	88022-I552-0000	INDDICATOR,GEARSHIFT	149,18 kn	182,00 kn
P42-5	87119-I552-0000	GEARSHIFT BULB 12V1.7W	15,12 kn	18,45 kn
P42-6	84200-I552-0000	LOCK,IGNITION SWITCH	172,69 kn	210,68 kn
P42-7	9A133-1042-019X0X	SCREW ST4.2×19	6,30 kn	7,69 kn
P42-8	61311-I552-0000	RUBBER TUBE PROTECT OIL(φ10×φ12×350)	46,08 kn	56,22 kn
P42-9	9A133-1042-012X0X	SCREW ST4.2×12	6,30 kn	7,69 kn
P42-10	B0084800050000K0B	WASHER 5	6,30 kn	7,69 kn

Freio traseiro



REF NO.	PARTS NO.	EN DESCRIPTION	VPC/komad	MPC/komad
P43-0			191,56 kn	233,70 kn
P43-1	B05783000600357	BOLT M6×35	7,56 kn	9,22 kn
P43-2	54208-I000-0000	INDICATE PLATE	1,26 kn	1,54 kn
P43-3	54210-I111-0000	SEAL	2,52 kn	3,07 kn
P43-4	84212-I111-0000	BOLT M8×16-Φ10×15	13,86 kn	16,91 kn
P43-5	B0009701060000K	WASHER Φ6	3,78 kn	4,61 kn
P43-6	B0617000060000K	NUT M6	6,30 kn	7,69 kn
P43-7	B00091000200252	PIN Φ2×25	0,00 kn	0,00 kn
P43-8	B06170000800006	NUT M8	6,30 kn	7,69 kn
P43-9	B0009701080000K	WASHER Φ8	3,78 kn	4,61 kn
P43-10	B0009701080000K	WASHER Φ8	3,78 kn	4,61 kn
P43-11	54207-I111-0000	PULL ARM	52,08 kn	63,54 kn
P43-12	54209-I111-0000	CAM,REAR BRAKE DEVICE	73,08 kn	89,16 kn
P43-13	54205-I111-0000	COVER,REAR BRAKE DEVICE COVER	116,33 kn	141,92 kn
P43-14	54204-I111-0000	SHOE COMP,REAR BRAKE DEVICE	65,52 kn	79,93 kn
P43-15	54206-I111-0000	SPRING,REAR BRAKE DEVICE	5,04 kn	6,15 kn